



## Company Profile



# Veepee Engineers

📍 Work : 225/I, Maheshpur, Ind. Estate Lahartara, Varanasi-221 106  
H.O. : 123 A, Ravindrapuri, Varanasi-221 005 (India)

### Contact Person-

Mr. Rohit Jain:- +91-9125142400, +91-7007143141

Mr. P.K. Jain:- +919125140400, +917985759501

E-mail:- [veepeeengr@gmail.com](mailto:veepeeengr@gmail.com)

Website:- [www.veepeeengineer.com](http://www.veepeeengineer.com)



# Veepee Engineers

Work : 225/1, Maheshpur, Ind. Estate Lahartara, Varanasi-221 106  
H.O. : 123 A, Ravindrapuri, Varanasi-221 005 (India)

From a modest start in 1976 the company today sprawls over a constructed area of 40,000.sft of manufacturing & fabrication facilities backed by large number of facility owners, engineers, designers & contractors and is adequately equipped and competent in various fields of design, development & execution. The company is upto date with modern communication facility in Varanasi, Uttar Pradesh, India and also have ISO 9001-2008 accreditation besides having NSIC certification.

# Our Services

## 1. CNC CUTTING

The accuracy of cutting on our CNC machines can reach 0.01 mm, and the dimensions of the cutout elements can be as small as a few millimeters or several meters.

Our CNC machines are capable of not only cutting through materials, but also allow for complex multi-level machining, 3D milling, welding, surfacing, and much more.

## 2. FABRICATION

With the assistance of our experienced professionals' team, we have been capable of providing best-in-class Stainless Steel Fabrication services in Varanasi to the clients.

Our solutions are provided exactly in consonance with the set industry standards.

## 3. LASER CUTTING

Laser cutting is a modern and highly efficient way of cutting and processing various materials. It allows you to get high quality products in a short period of time.

laser cutting has not been completely replaced by any other cutting method. Even cutting methods such as plasma, waterjet and milling are inferior in some parameters to laser cutting.

# We Manufacture

**1.**

## Light & Heavy Metal Structures

- Machine Parts.
- Tube Well Items.
- MS & SS Structures.
- Metal sheet structures.

**2.**

## Metal Artwork, WallArt & Decoratives

- Metal Gift Items.
- Wall decoratives.
- Designer room Partitioning etc.

**3.**

## VIMPA Make Pipeline Products

- Pipe Coupling.
- Flange Adapters.
- Dismantling Joints.
- Bell joint etc.

# Our workshop

SPTL

## CNC FIBER LASER

1.5 KW  
CAPACITY



- Fine artistic designs
- Smooth finishing
- Quick service



# Our workshop

## **HYPERTHERM CNC PLASMA (50MM 3000 x 6000 MM CAPACITY)**

- Thick sheet cutting.
- 50 mm capacity.
- Heavy duty.



# Our workshop

**SHEAR  
MACHINE**



• 8mm x 3 Mtr.



# Our workshop

**BRAKE PRESS**



• 8MM X 3MTR.





# Our workshop

**HYDRAULIC  
PRESS**



**. 500 TON**



# Our workshop

**MIG / TIG /  
SPORT  
Welding**



- Virtual
- VR Film
- Unique Virtual experience.

# Our workshop

**POWER  
PRESS & DO  
ALL PRESS**



**. 85/50 TON**



# Our workshop

**ROLLING  
MACHINE**



**. 25 X 2500MM**



# Our workshop

**CRANE**



**. 5 TON**



# Our workshop

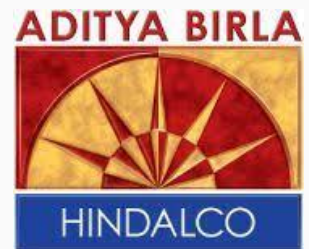
**LARGE  
STRUCTURE**



• 3 X 5 X 7 MTR



# Our served Clients



**Banaras Locomotive Works, Varanasi**  
An IRIS (ISO 22163), ISO 9001, 14001, 45001 & 5-S CERTIFIED ORGANISATION  
Varanasi-22 1004, Uttar Pradesh (India)  
Tel.: 0542-227 0551-55, Fax: 0542-227 0603

# Our served Clients



**RELIANCE**  
**Power**



# Our served Clients

## LIST OF CLIENTS USING "VIMPA" PIPE REPAIR PRODUCTS

### A. NTPC & THERMAL BOARDS:

1. EPC PARTIES BSBK , MACAWER , UCC , DCIPS , Techpro Ashtech etc
2. NTPC/SHAKTINAGAR
3. NTPC/ VINDHYANAGAR
4. NTPC/RAMAGUNDAM
5. NTPC/ KORBA
6. NTPC/ UHCHAHAR
7. NTPC/KAHALGAON
8. APSEB
9. DOMODAR VALLEY CORPN/CHANDRAPUR
10. UPSEB/OBRA
11. UPSEB/ANPARA
12. KARNATAKA POWER CORPN. LTD / RAICHUR
13. KOTA THERMAL POWER STATION
14. MAHARASHTRA STATE ELEC. BOARD/ EKLAHARE
15. KOTA THERMAL POWER STATION RAJASTHAN
16. BIHAR STATE ELEC. BOARD

### B. REFINERY , NATURAL GAS & PETROCHEMICALS:

1. BONGAIGAON REFINERY & PETROCHEMICALS LTD.
2. ONGC
3. BHARAT PETROLEUM LTD.
4. GAIL / BARODA

### C. OFF – SHORE DRILLING:

1. JINDAL DRILLING & INDUSTRIES LTD.
2. ONGC
3. GAIL OFFSHORE SERVICES

### D. PROCESS, CHEMICALS, FERTILIZERS, SOAP:

1. RELIANCE INDUSTRIES LTD.
2. INDO GULF FERTILIZERS & CHEM. LTD/ JAGDISHPUR
3. ORISSA SYNTHETIC LTD.
4. TRANSTECH TURNKEY (P) LTD.
5. SHRIRAM FERTILIZERS & CHEMICALS LTD.
6. GUJRAT ALKALI & CHEMICAL LTD.
7. NOCIL LTD/ BOMBAY

### E. STEEL PLANTS :

1. SAIL / BOKARO STEEL PLANT
2. SAIL / DUGRAPUR
3. SAIL / BHILAI
4. SAIL / ROURKELA

### F. PAPER & CEMENT:

1. MANDHYA NATIONAL PAPER MILL LTD / MYSORE
2. HPC
3. ORISSA CEMENT LTD.
4. L/T AWARPUR

### G. PHED/ SEWAGE BOARDS:

1. GEO MILLER AND CO. PVT. LTD.
2. STATE SEWAGE BOARDS

### H. HEAVY ENGG. INDUSTRIES :

1. GEC / NAINI
2. CIMMCO INTERNATIONAL
3. TAXMACO LTD.

# Vimpa

## DISMANTLING JOINTS



**Vimpa** Dismantling Joint is a double flanged fitting that allows longitudinal adjustments in flanged pipe systems. It has been developed to provide greater flexibility at both the planning and installation stages of flanged pipework systems and for subsequent maintenance.

### TYPICAL APPLICATIONS:

Vimpa Dismantling Joint is particularly suitable for simplifying the installation and removal of :

- Isolation valves
- Non return valves
- Flow metering equipment
- Pump sets
- Pressure reducing valves Flanged pipe and fittings

Typical Dismantling Joint applications include.; Pumping stations, water treatment works, sewage treatment works, plant rooms, meter chambers, power generation equipment and gas distribution stations.

### FEATURES & BENEFITS

- Permits Longitudinal adjustment up to 50mm.
- Fast & simple maintenance of valves pumps etc.
- Future modification of pipework can be done easily
- Reduced down time.
- High tensile tie-bars – fewer flange bolts required.

**Range : DN40-DN2000**

### INSTALLATION

Assembly is fast & possible with the aid of spanner & torque – wrench. Gasket of DMJ is compressed independently of tie-bars.

### QUALITY

All DMJ are manufactured under quality management system to ISO 9001:2000.

### CORROSION AND PROTECTION

Standard protection by epoxy Painting. Should you require Fusion bonded Epoxy/Rilsan powder coating, it is available at extra cost. Offer on request. Tie rods are supplied with Zn-plating or epoxy painted at our option.

### WORKING PRESSURE

All Vimpa Dismantling Joints are fully end load resistant and have a pressure rating equal to that of the flange.

### FULL FACE FLANGE

For applications where a full face flange is required i.e. water and butterfly valves, the flange of the spigot piece provides a full flange sealing area.

### PRODUCT QUALITY

Dismantling Joints are designed and manufactured under a quality management system and have been tested by Vimpa comprehensive in house research facilities to the most exacting performance requirements of WRC Water Bye-laws scheme (WBS). As with all Vimpa products, Dismantling Joint are designed to outlast the pipes on which they are fitted.

### GASKETS

Dismantling Joints are fitted with grade E (EPDM) water quality gaskets as standard. For other applications or alternatives, please ask for details.

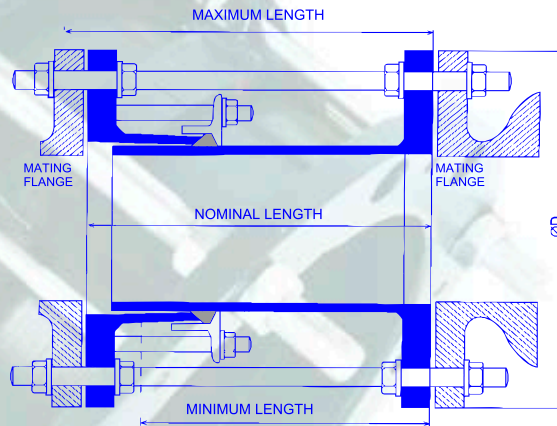
### MATERIAL SPECIFICATION

#### DMJ Flanged Fittings & Compression Flange :

	<b>B.S. Specification</b>	<b>B.I.S. Specification</b>
	SG Ductile Iron or Malleable Cast Iron or Fabricated from steel or Grey Cast Iron	IS 1865:2000 IS 14329:2000 IS 2062:2004 IS 210:1999
<b>Gaskets:</b>	EPDM Compound Grade 'E' to BS EN 681-1:1996 suitable for water, sewage, many strong oxidizing chemicals & food applications or Nitrile compound Grade 'G' to BS:2494:1990 Grade G suitable for natural gas, petroleum products. Low aromatic fuels, compressed air, sewage & drainage.	
<b>Stud:</b>	Steel fastener to Grade 6.8 (SS available on request)	



# DISMANTLING JOINTS



Nominal bore	Flange drilling	Nominal length	Minimum length	Maximum length	ØD	Number of tie bars	Dia x length of tie bars	Weight appx. (kg.)
DN 40	PN 10/16	194 mm	174 mm	214 mm	150mm	4	M16x300mm	9.7
DN 50	PN 10/16	185 mm	165mm	205 mm	185mm	4	M16x300mm	8.3
DN 65	PN 10/16	185 mm	165 mm	205 mm	185 mm	4	M16x300mm	9.3
DN 80	PN 10/16	185mm	165 mm	205 mm	210 mm	4	M16x300mm	10.8
DN 100	PN 10/16	185 mm	165 mm	205 mm	230 mm	4	M16x300mm	12.1
DN 125	PN 10-16	185mm	165 mm	205 mm	285 mm	4	M16x300mm	14.5
DN 150	PN 10/16	188 mm	168 mm	208 mm	285 mm	4	M20x310mm	21.0
DN 175	PN 10/16	194mm	174 mm	214 mm	315 mm	4	M20x340mm	29.2
DN 200	PN 10	188 mm	168 mm	208 mm	340 mm	4	M20x310mm	26.9
DN 200	PN16	188mm	168mm	208 mm	340 mm	4	M20x310mm	27.4
DN 250	PN 10	188 mm	168 mm	208 mm	406 mm	4	M20x310mm	33.8
DN 250	PN 16	191 mm	171 mm	211 mm	405 mm	4	M24x330mm	39.9
DN 300	PN 10	188 mm	168 mm	208 mm	445 mm	4	M20x310mm	39.1
DN 300	PN 16	191 mm	171 mm	211 mm	460 mm	4	M24x330mm	46.8
DN 350	PN 10	302 mm	277 mm	327 mm	505 mm	4	M20x440mm	67.7
DN 350	PN 16	302 mm	277 mm	327 mm	520..mm	4	M24x460mm	73.7
DN 400	PN 10	302 mm	277 mm	327 mm	565 mm	4	M24x460mm	80.3
DN 400	PN16	302 mm	277 mm	327 mm	580 mm	4	M27x490mm	87.5
DN 450	PN 10	302 mm	277 mm	327 mm	615 mm	5	M24x460mm	89.5
DN 450	PN 16	302 mm	277 mm	327 mm	640 mm	5	M27x490mm	102.0
DN 500	PN 10	302 mm	277 mm	327 mm	670 mm	5	M24x460mm	100.0
DN 500	PN 16	302 mm	277 mm	327 mm	715mm	5	M30x500mm	123.0
DN 600	PN 10	302 mm	277 mm	327 mm	780 mm	5	M27x490mm	124.0
DN 600	PN 16	302 mm	277 mm	327 mm	840mm	5	M33x515mm	159.0
DN 700	PN 10	302 mm	277 mm	327 mm	895 mm	6	M27x490mm	151.0
DN 700	PN 16	302 mm	277 mm	327 mm	910 mm	6	M33x540mm	167.0
DN 800	PN 10	302 mm	277 mm	327 mm	1015 mm	6	M30x500mm	184.0
DN 800	PN 16	302 mm	277 mm	327 mm	1025 mm	6	M36x545mm	199.0
DN 900	PN 10	302 mm	277 mm	327 mm	1115 mm	7	M30x530mm	205.0
DN 900	PN 16	302mm	277 mm	327 mm	1125 mm	7	M36x570mm	223.0
DN 1000	PN10	307 mm	277 mm	337 mm	1230 mm	7	M33x540mm	271.0
DN 1000	PN 16	307 mm	277 mm	337 mm	1255 mm	7	M39x600mm	300.0
DN 1200	PN 10	320 mm	290 mm	350 mm	1455 mm	8	M36x570mm	448.0
DN 1200	PN 16	320 mm	290 mm	350 mm	1485 mm	8	M45x630mm	508.0
DN 1400	PN 10	320 mm	290 mm	350 mm	1675 mm	9	M39x600mm	547.0
DN 1400	PN 16	320 mm	290 mm	350 mm	1685 mm	9	M45x665mm	602.0
DN 1600	PN 10	462 mm	412 mm	512 mm	1915 mm	10	M45x795mm	1103.0
DN 1600	PN 16	462 mm	412 mm	512 mm	1930 mm	10	M52x870mm	1188.0
DN 1800	PN 10	462 mm	412 mm	512mm	2115 mm	11	M45x795mm	1176.0
DN 1800	PN 16	462 mm	412mm	512mm	2130 mm	11	M52x900mm	1363.0
DN 2000	PN 10	462 mm	412 mm	512 mm	2325 mm	12	M45x820mm	1351.0
DN 2000	PN 16	462 mm	412 mm	512 mm	2345 mm	12	M56x960mm	1594.0



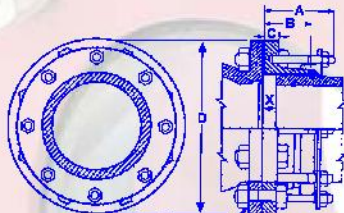
## Veepee Engineers

H.O :- 123-A ravindrapuri Varanasi-221101  
 Work :- 225/1 Maheshpur Industrial Estate Varanasi-221106

Mob:- 9125140400,7985759501  
 Email : Veepeeengr@gmail.com

# Vimpa

## FLANGE ADAPTORS



E holes for F bolts on G dia, pitch circle

for STEEL and IMPERIAL uPVC PIPE  
Flanges Drilled to NP10 & NP16 44.5mm  
(1.75") to 2020mm (79.528") O.D.

Flange Adaptors for CI, DI, AC & other odd size pipes also available.



### PIPE DIMENSIONS

### ADAPTOR DIMENSIONS & DETAILS

Nom. Bore	Pipe O.D.		Nom Flange Size	Table NP	A	B	C	D	E. HOLES		F. BOLTS		STUDS		Approx weight
	mm	in							No.	Dia.	Dia.	G PCD	No. Off	Dia x Length	
mm	mm	in	mm		mm	mm	mm	mm	mm	in	mm		in	kg	
32	44.5	1.750	32	10,16	108	73	25	140	4	19	16	100,100	2	0.5x3.75	3.25
40	48.3	1.906	40	10,16	108	73	25	150	4	19	16	110,110	2	0.5x3.75	3.6
40	57	2.250	50	10,16	116	75	16	165	4	18	16	114.5,127	2	0.5x4.25	2.96
50	60.3	2.375	50	10,16	116	75	16	165	4	18	16	114.5,127	2	0.5x4.25	2.96
65	73	2.875	65	10,16	108	73	25	185	4	19	16	145,145	2	0.5x3.75	5.3
65	76.1	3.000	65	10,16	116	75	16	185	4	18	16	135,146	2	0.5x4.25	3.34
80	88.9	3.500	80	10,16	116	75	16	200	8	18	16	145,165	4	0.5x4.25	4.32
90	101.6	4.000	90	10,16	108	73	25	210	8	19	16	170,170	4	0.5x3.75	6.4
100	108	4.250	100	10,16	116	75	16	229	8	18	16	178,190.5	4	0.5x4.25	5.53
100	114.3	4.500	100	10,16	116	75	16	229	8	18	16	178,190.5	4	0.5x4.25	4.93
100	127	5.000	100	10,16	108	73	25	220	8	19	16	180,180	4	0.5x3.75	6.7
125	139.7	5.500	125	10,16	116	75	16	254	8	18	16	210,210	4	0.5x4.25	6.63
125	141.3	5.563	125	10,16	116	75	16	254	8	18	16	210,210	4	0.5x4.25	6.63
150	165.1	6.500	150	10,16	116	75	19	285	8	22	20	235,241.5	4	0.5x4.25	8.4
200	219.1	8.625	200	10	116	75	19	343	8	22	20	303	4	0.5x4.25	11.68
200	219.1	8.625	200	16	116	75	19	340	12	22	20	295	6	0.5x4.25	12.93
250	273	10.750	250	10	129	90	19	406	12	22	20	350,355.5	6	0.5x4.75	16.02
300	323.9	12.750	300	16	129	90	22	460	12	28	24	406,410	6	0.5x4.75	21.44
350	355.6	14.000	350	10	140	97	25	505	16	23	20	460	8	0.5x5.00	27.9
350	355.6	14.000	350	16	140	97	25	520	16	28	24	470	8	0.5x5.00	29.6
400	406.4	16.000	400	10	140	97	25	565	16	28	24	515	8	0.5x5.00	32.3
400	406.4	16.000	400	16	140	97	25	580	16	31	27	525	8	0.5x5.00	34.5
450	457	18.000	450	10	140	97	25	615	20	28	24	565	10	0.5x5.00	35.6
450	457	18.000	450	16	140	97	25	640	20	31	27	585	10	0.5x5.00	39.8
500	508	20.000	500	10	140	97	25	670	20	28	24	620	10	0.5x5.00	40.0
500	508	20.000	500	16	140	97	25	715	20	34	30	650	10	0.5x5.00	48.4
550	559	22.000	550	10	140	97	25	730	20	31	27	675	10	0.5x5.00	45.1
550	559	22.000	550	16	140	97	25	775	20	34	30	710	10	0.5x5.00	54.9
600	610	24.000	600	10	140	97	25	780	20	31	27	725	10	0.5x5.00	48.6
600	610	24.000	600	16	140	97	25	840	20	37	33	770	10	0.5x5.00	62.3



# FLANGE ADAPTORS



PIPE DIMENSIONS				ADAPTOR DIMENSIONS & DETAILS											
Nom. Bore	Pipe O.D.		Nom Flange Size	Table NP	A	B	C	D	E. HOLES		F. BOLTS		STUDS		Approx weight
	mm	in							No.	Dia.	Dia.	G PCD	No. Off	Dia x Length	
mm	mm	in	mm		mm	mm	mm	mm	mm	in	mm		in	kg	
650	660	26.000	650	10	140	97	25	835	24	31	27	780	12	0.5x5.00	53.3
650	660	26.000	650	16	140	97	25	860	24	37	33	790	12	0.5x5.00	58.3
700	711	28.000	700	10	140	97	25	895	24	31	27	840	12	0.5x5.00	59.6
700	711	28.000	700	16	140	97	25	910	24	37	33	840	12	0.5x5.00	62.3
750	762	30.000	750	10	140	97	25	965	24	34	30	900	12	0.5x5.00	68.5
750	762	30.000	750	16	140	97	25	970	24	37	33	900	12	0.5x5.00	69.2
800	813	32.000	800	10	140	97	25	1015	24	34	30	950	12	0.5x5.00	72.5
800	813	32.000	800	16	140	97	25	1025	24	40	36	950	12	0.5x5.00	74.0
900	914	36.000	900	10	140	97	25	1115	28	34	30	1050	14	0.5x5.00	80.2
900	914	36.000	900	16	140	97	25	1125	28	40	36	1050	14	0.5x5.00	81.7
1000	1016	40.000	1000	10	155	112	25	1230	28	37	33	1160	14	0.625x5.75	113.1
1000	1016	40.000	1000	16	155	112	25	1255	28	43	39	1170	14	0.625x5.75	120.6
1100	1118	44.000	1100	10	155	112	25	1340	32	37	33	1270	16	0.625x5.75	126.9
1100	1118	44.000	1100	16	155	112	25	1355	32	43	39	1270	16	0.625x5.75	130.7
1200	1219	48.000	1200	10	175	125	38	1455	32	40	36	1380	16	0.625x6.00	202.3
1200	1219	48.000	1200	16	175	125	38	1485	32	49	45	1390	16	0.625x6.00	216.8
1400	1420	55.906	1400	10	175	125	38	1675	36	43	39	1590	18	0.625x6.00	246.1
1400	1420	55.906	1400	16	175	125	38	1685	36	49	45	1590	18	0.625x6.00	249.3
1600	1620	63.780	1600	10	273	185	60	1915	40	49	45	1820	40	0.625x9.00	506.7
1600	1620	63.780	1600	16	273	185	60	1930	40	56	52	1820	40	0.625x9.00	517.1
1800	1820	71.654	1800	10	273	185	60	2115	44	49	45	2020	44	0.625x9.00	565.4
1800	1820	71.654	1800	16	273	185	60	2130	44	56	52	2020	44	0.625x9.00	576.9
2000	2020	79.528	2000	10	273	185	60	2325	48	49	45	2230	48	0.625x9.00	641.2
2000	2020	79.528	2000	16	273	185	60	2345	48	62	56	2230	48	0.625x9.00	650.1

## MATERIAL SPECIFICATION

### Flange adaptor body, compression flange and sleeve

SG Ductile Iron  
or Malleable Cast Iron  
or Fabricated from steel

**B.S. Specification**  
BS EN 1563:1997  
BS EN 1562  
BS EN 10025:1993 Grade S275

**B.I.S. Specification**  
IS 1865:2000  
IS 14329:2000  
IS 2062:2004

**Gaskets:** EPDM Compound Grade 'E' to BS EN 681-1:1996 suitable for water, sewage, many strong oxidizing chemicals & food applications  
or Nitrile compound Grade 'G' to BS:2494:1990 Grade G suitable for natural gas, petroleum products. Low aromatic fuels, compressed air, sewage & drainage.

**Stud & Nuts:** Steel fastener to Grade 6.8 (SS available on request)

## VEEPEE ENGINEERS

Office-123-A ravindrapuri, Varanasi-221005

Tel: + 91 542 2373394, 9125140400, 9125142400

Fax: + 91 542 2371258

Mail: veepeeengr@gmail.com

Web: Veepeeengineers.com

# VIMPA

## GROOVED END COUPLING

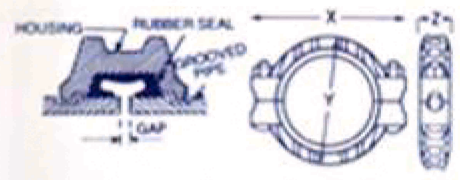


Style 75 is available where moderate pressures are expected or weight considerations as a factor. Up to 50% lighter in weight than the Style 77, the Style 75 coupling is recommended for lower working pressure.



Dimensions for Grooved Coupling Style 75

Pipe Size		Overall dimensions			Joint particulars		
Nominal Bore	OD	X	Y	Z	Bolts		Test Pressure Mpa
Inch	mm	mm	mm	mm	Dia mm & Inch	Length mm	
1"	33.4	105	61	45.0	10	50	3.5
1 1/4"	42.2	114	68	45.0	10	50	3.5
1 1/2"	48.3	117	78	46.0	10	50	3.5
2"	60.3	128	89	47.0	10	50	3.5
2 1/2"	73.0	150	104	47.0	10	50	3.5
2 1/2"	76.1	150	104	49.0	10	50	3.5
3"	88.9	166	118	49.0	1/2"	62	3.5
4"	114.3	202	144	53.0	1/2"	62	3.5
5"	141.3	255	178	53.0	5/8"	83	3.1
6"	168.3	276	204	53.0	5/8"	83	3.1
8"	219.1	355	263	57.0	5/8"	108	3.1
10"	273.0	406	330	63.0	3/4"	127	3.1
12"	323.9	449	385	64.0	1"	152	3.1



The standard of the line, style 77 is available in a broad range of IPS sizes for varied services. The housing has ribbed construction to provide maximum strength without unnecessary weight. The coupling is capable of withstanding high pressure



Dimensions for Grooved Coupling Style 77

Pipe Size		Overall dimensions			Joint particulars		
Nominal Bore	OD	X	Y	Z	Bolts		Test Pressure Mpa
Inch	mm	mm	mm	mm	Dia mm & Inch	Length mm	
1/2"	21.7	89	50	45	10	50	6.8
3/4"	26.7	96	55	45	10	50	6.8
1"	33.4	98	63	46	10	50	6.8
1 1/4"	42.2	112	72	47	1/2"	62	6.8
1 1/2"	48.3	120	80	47	1/2"	62	6.8
2"	60.3	143	95	47	1/2"	62	6.8
2 1/2"	73.0	149	109	47	1/2"	62	6.8
2 1/2"	76.1	164	113	48	1/2"	62	6.8
3"	88.9	170	131	48	1/2"	62	6.8
4"	114.3	214	156	52	5/8"	83	6.8
5"	141.3	255	195	52	5/8"	83	6.8
6"	168.3	290	219	52	5/8"	108	6.8
8"	219.1	370	276	62	3/4"	127	5.4
10"	273.0	432	340	65	1"	152	5.4
12"	323.9	490	390	65	1"	152	5.4
14"	355.6	530	420	76	1"	165	2.0
16" **	406.4	570	485	76	1"	95	2.0
18" **	457.0	602	540	79	1"	95	2.0
20" **	508.0	688	597	79	27	108	2.0
22" **	559.0	740	650	79	27	108	2.0
24" **	610.0	795	700	79	27	108	2.0

\*\* Couplings are in 4 Section

### VEEPEE ENGINEERS

Office: 123-A, Ravindrapuri, Varanasi-221005, India. Tel: +91 542 2373394

E-mail: veepeeengr@gmail.com, URL: www.veepeeengineers.com

# Vimpa

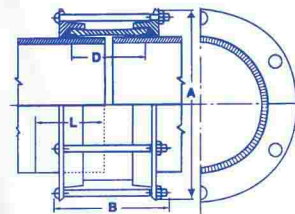
## 'PE' COUPLINGS

- Vimpa PE Coupling is mechanical pipe Coupling meant for plain end pipes. It comprises two flanges (MCI/DI) one central sleeves (M.S) two wedge section Rubber Rings one set of single spanner Zn-plated Bolt & Nut.
- Tightening of the bolts draws the flanges together compressing the sealing rings in gap between the sleeve and end flanges on to the pipe thus effecting a leak tight joint.
- Rubber Sealing Rings are available in Nitrile, EPDM, Viton, Silicon. They are available in quick fit (upto DN 300) and un-fit versions.



**for STEEL and IMPERIAL uPVC PIPE 38mm to 2020mm O.D.**

*Coupling for CI, DI, AC & other odd size pipes also available.*



PIPE DIMENSIONS			COUPLING DIMENSIONS & DETAILS								
Norm Bore	Pipe O. D.	Tolerance on O.D. for Distance L	L	A	B	SLEEVE D x Average Thickness	PLUGS No. Off	BOLTS		Max. Test Pressure	Approx Weight
mm	mm In	mm	mm	mm	mm	mm		No. Off	Dia x Length in	bar	kg
	38	+ 0.8									
32	1.500	- 0.4	100	111	152	80x5.5	1	2	0.5x5.50	70	1.50
	44.5	+ 0.8									
32	1.750	- 0.4	100	120	152	80x5.5	1	2	0.5x5.50	70	1.50
	48.3	+ 0.8									
40	1.906	- 0.4	100	122	152	80x5.5	1	2	0.5x5.50	70	1.90
	60.3										
50	2.375	± 0.8	100	136	152	80x5.5	1	2	0.5x5.50	70	2.20
	73										
65	2.875	± 0.8	100	152	170	100x6.0	1	2	0.5x5.75	70	2.80
	76.1										
65	3.000	± 0.8	100	152	170	100x6.0	1	2	0.5x5.75	70	2.80
	88.9										
80	3.500	± 0.8	100	163	170	100x6.0	1	3	0.5x6.25	70	4.00
	101.6										
90	4.000	± 0.8	100	176	170	100x6.0	1	4	0.5x6.25	70	5.20
	108										
100	4.250	± 0.8	100	187	170	100x6.0	1	4	0.5x6.25	70	5.30
	114.3										
100	4.500	± 0.8	100	195	170	100x6.0	1	4	0.5x6.25	70	5.50
	127										
100	5.000	± 0.8	100	204	170	100x6.0	1	4	0.5x6.25	70	5.90
	139.7	+ 1.6									
125	5.500	- 0.8	100	226	170	100x6.6	1	4	0.5x6.25	65	6.50
	141.3	+ 1.6									
125	5.563	- 0.8	100	226	170	100x6.6	1	4	0.5x6:25	65	6.50
	152.4	+ 1.6									
150	6.600	- 0.8	100	237	170	100x6.6	1	4	0.5x6.25	60	7.80
	165.1	+ 1.6									
150	6.500	- 0.8	100	251	170	100x6.6	1	4	0.5x6.25	55	8.00
	168.3	+ 1.6									
150	6.625	- 0.8	100	255	170	100x6.6	1	4	0.5x6.25	55	8.00





PIPE DIMENSIONS			COUPLING DIMENSIONS & DETAILS								
Norm Bore	Pipe O. D.	Tolerance on O.D. for Distance L	L	A	B	SLEEVE D x Average Thickness	PLUGS No. Off	BOLTS		Max. Test Pressure	Approx Weight
mm	mm In	mm	mm	mm	mm	mm		No. Off	Dia x Length in	bar	kg
200	219.1 8.625	+ 1.6 - 0.8	100	310	170	100x6.6	1	5	0.5x6.25	50	8.00
225	244.5 9.625	+ 1.6 - 0.8	100	332	170	100x6.6	2	6	0.5x6.25	50	14.00
250	273 10.750	+ 1.6 - 0.8	100	362	170	100x6.6	2	6	0.5x6.25	50	16.10
300	323.9 12.750	+ 1.6 - 0.8	100	414	170	100x7.0	2	6	0.5x6.25	45	19.0
350	355.6 14.000	± 1.6	125	443	227	150x7.7	2	6	0.5x6.50	35	24.0
400	406.4 16.000	± 1.6	125	494	227	150x8.5	2	6	0.5x8.50	35	30.0
450	457 18.000	± 1.6	125	545	227	150x8.5	3	8	0.5x8.50	35	38.0
500	508 20.000	± 1.6	125	595	227	150x8.5	3	10	0.5x8.50	35	43.0
550	559 22.000	± 1.6	125	646	227	150x9.0	3	10	0.5x8.50	35	50.0
600	610 24.000	± 1.6	125	697	227	150x9.0	3	10	0.5x8.50	35	55.0
650	660 26.000	± 1.6	125	748	227	150x9.0	3	12	0.5x8.50	35	58.0
700	711 28.000	± 1.6	125	799	227	150x9.0	3	12	0.5x8.50	30	63.0
750	762 30.000	± 1.6	125	849	227	150x9.0	3	12	0.5x8.50	30	66.0
800	813 32.000	± 1.6	125	900	227	150x9.0	3	14	0.5x8.50	25	76.0
850	864 34.000	± 1.6	125	951	227	150x9.0	3	14	0.5x8.50	25	83.0
900	914 36.000	± 1.6	125	1002	227	150x9.0	3	14	0.5x8.50	25	90.0
1000	1016 40.000	± 1.6	150	1125	260	178x9.0	3	14	0.625x9.75	25	105
1050	1067 42.000	± 1.6	150	1176	260	178x9.0	3	14	0.625x9.75	25	110
1100	1118 44.000	± 1.6	150	1227	260	178x9.0	3	14	0.625x9.75	25	115
1200	1219 48.000	± 1.6	150	1344	280	178x11.1	3	16	0.625x10.50	25	150
1400	1420 55.906	+ 1.6 - 3.2	150	1545	280	178x11.1	3	20	0.625x10.50	25	180
1800	1820 71.654	± 3.2	150	1945	280	178x11.1	3	28	0.625x10.50	25	230
2000	2020 79.528	± 3.2	200	2154	413	254x14.3	3	26	0.625x15.75	25	430

**VEEPEE ENGINEERS**

Office-123-A ravindrapuri, Varanasi-221005  
 Tel: + 91 542 2373394, 9125140400, 9125142400  
 Fax: + 91 542 2371258  
 Mail: veepeeengr@gmail.com  
 Web: Veepeeengineers.com





# FLANGE ADAPTOR, AND DISMANTLING JOINT



## EXPANSION JOINTS



Type 1 is a single-end expansion joint permitting up to 10" of concentrated pipe movement. Standard packing for all types consists of alternate layers of resilient sealing rings and jute lubricating rings. Other packing for special service conditions can be



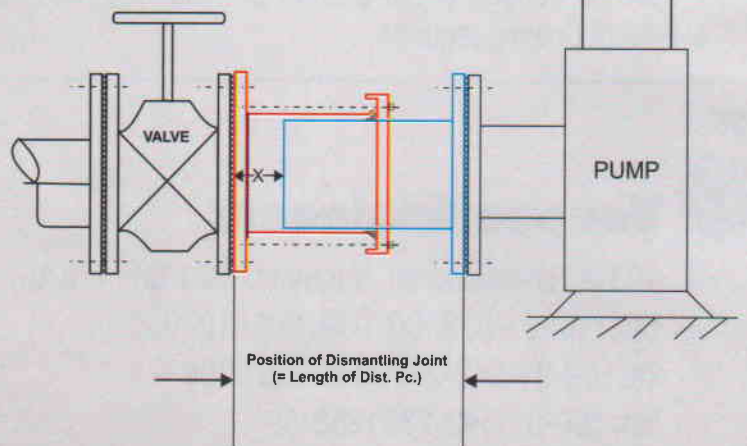
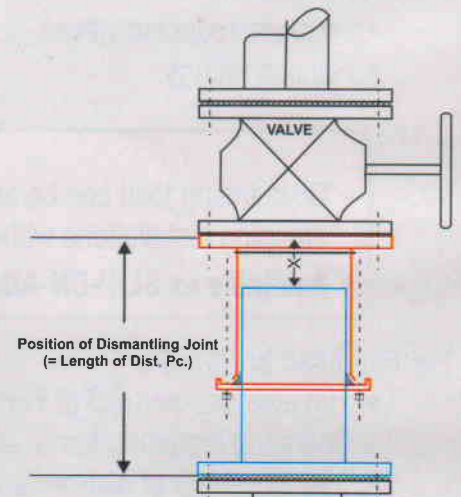
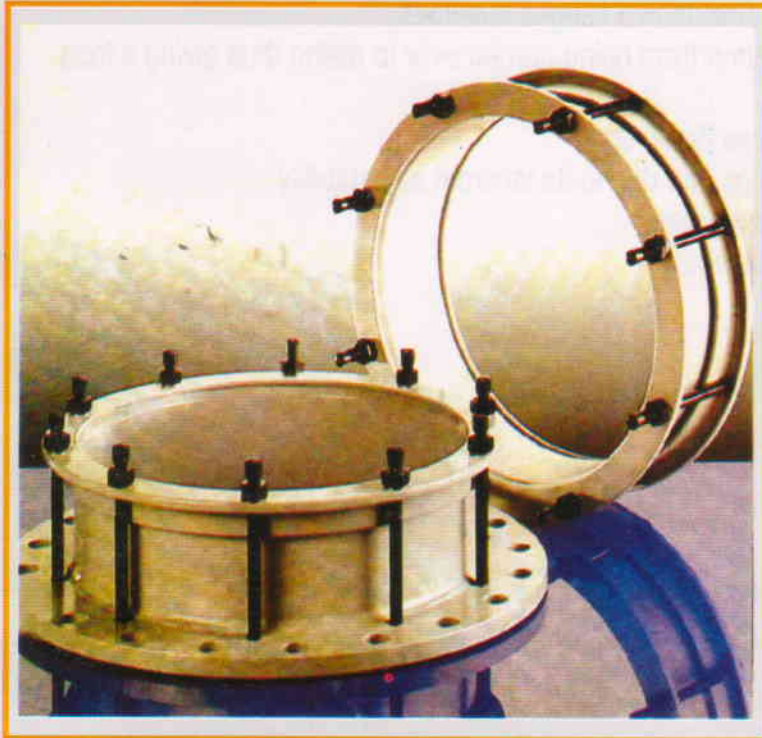
Type 2 is a double-end expansion joint. Standard construction permits a total of 8" movement (4" at each end) if the body is anchored. If it is not anchored, a maximum of 4" can be absorbed.



Type 3 is a single-end expansion joint equipped with a limited movement feature to limit the maximum amount of pipe withdrawal. Slip pipes are regularly furnished for Type 3 and Type 4 expansion joints.



Type 4 is a double-end, limited movement expansion joint. A stop is welded on the slip pipe and the regular bolts extended through the stop ring. Stop nuts behind the stop ring are then set to prevent pipe movement beyond a predetermined point.



## Typical Installation of Dismantling Joint

### PROBLEM :

Installation and dis-assembly of valves or pumps normally creates stresses on the system. Taking out valve or pump for maintenance calls for stoppage of the plant and the whole operation is quite cumbersome time taking and laborious, resulting in avoidable down time and loss of production.

### SOLUTION :

To eliminate occurrence of such events, "VIMPA" Flanged Adaptors / Dismantling joints are designed to provide better flexibility at both the planning and work systems. These offer ideal solution for Design Engineers as it:-

Cont., Overleaf

- ◆ Eliminates the locked up stresses of pipework of Conventional flanged pipelines.
- ◆ Eliminates / absorbs the ensuing Vibrations from pump from being carried over to piping thus giving a long lease of life to the installation.
- ◆ Simplifies future pipe work modifications and reduces down time.
- ◆ Allows fast and simple maintenance of valves, pumps etc. due to its inherent adjustability.
- ◆ Is available as a complete package-simplifying procurement.
- ◆ Eliminates the need for more complex anchoring systems.
- ◆ Extend the lifetime of your valve or pump.
- ◆ Construction needs minimum space.
- ◆ No welding required.
- ◆ Available with special coatings, on demand.
- ◆ No costly repairs due to pipework stresses.

These Dismantling joints are particularly suitable for simplifying the installations of :-

- ◆ Isolation Valves
- ◆ Non return Valves
- ◆ Flow metering equipment
- ◆ Pump sets
- ◆ Pressure reducing valves
- ◆ Flanged fittings

#### **Special Features:-**

- ✓ Dismantling joint can be accommodated in place of distance piece in your existing pumping installations without disturbing the existing pipework.
- ✓ **Available as SLIP-ON-ADAPTOR also**

#### **For purchase ordering :-**

- ◆ The pipe size and OD of Pipe.
- ◆ Operating pressure, temp. and medium handled.
- ◆ Overall Length of dismantling joint/length of distance piece.
- ◆ Specs of flanges for pump and valve (like OD, PCD, No. & size of holes).
- ◆ Type of Coating required.

**Mfgr:**



**Veepee Engineers**

123-A Ravindrapuri, Varanasi - 221 005 (INDIA)

Cell : 00-91-9336902039, 9918102039

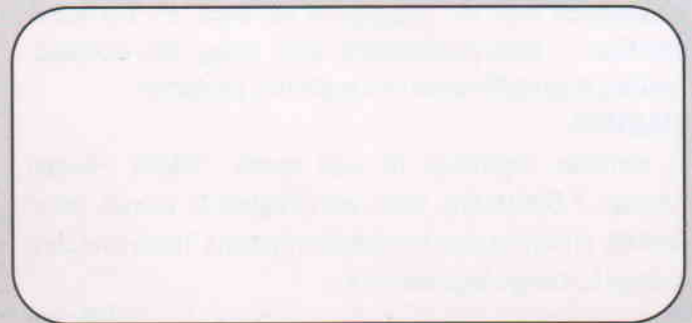
Tel : 00-91-542-2373390, 2373394

Fax : 00-91-542-2371258

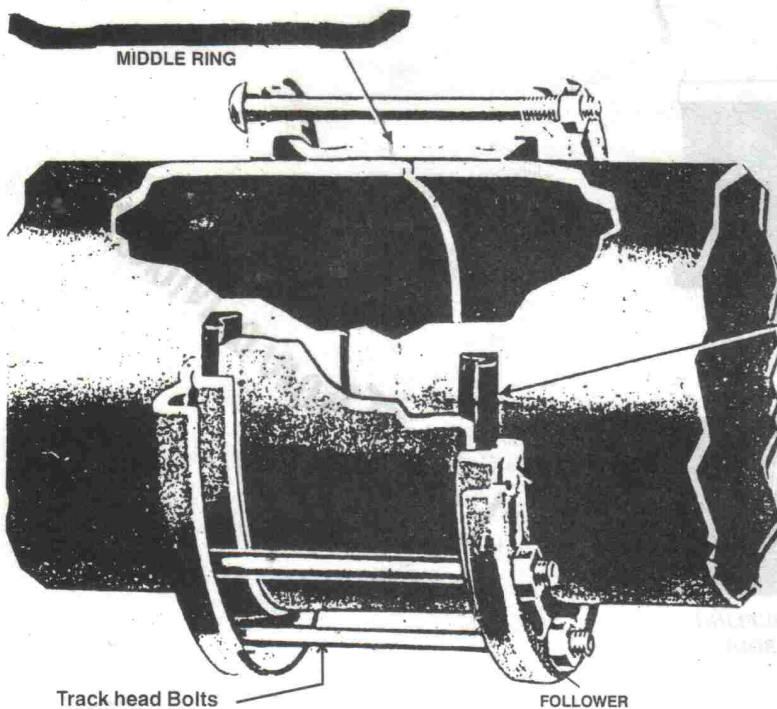
Website : veepeeengineers.com .

e-mail : veepeeengr@yahoo.com

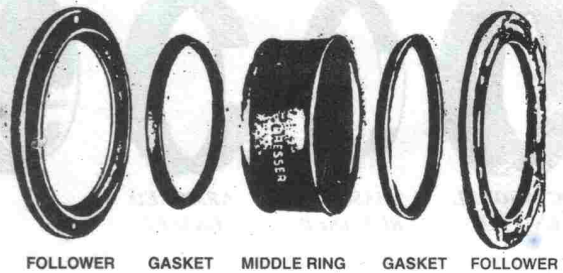
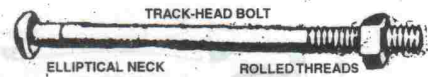
**ALSO AVAILABLE AT :**



# "VIMPA" COUPLINGS



Cross Section



Components

## *Fitting instruction*

1) Clean each pipe-end over a distance of 150 to 200 mm back from the end. Be sure to remove oil, dirt, loose scale and rust.

Slip follower rings over pipe-ends and slide them back over cleaned area. Wipe gaskets clean and immerse in soapy water, glycerine may be added in freezing weather, and slide them over pipe-ends.

2) Clean coupling middlring, paying particular attention to flares on ends where gaskets will seat. Then slip middlring over one pipe-end until centered.

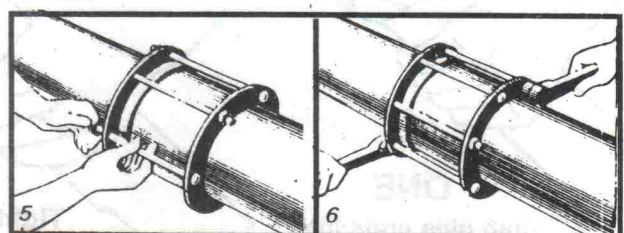
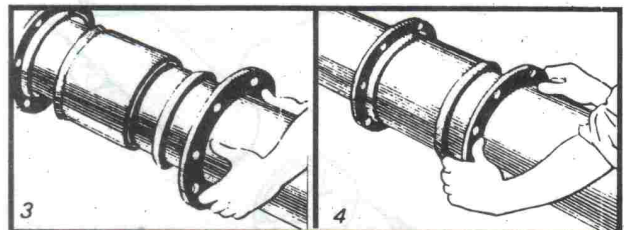
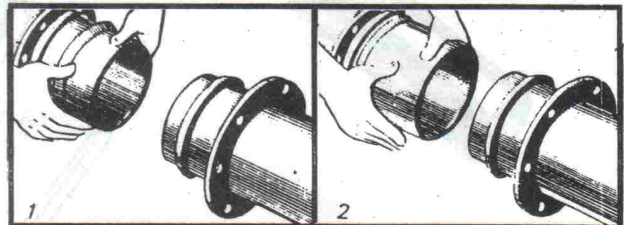
3) Stab end of pipe to be joined into middlring, leaving a gap of 13 mm between pipe-ends, to allow for movement occurences, and to relieve the stresses of thermal movements.

NB: When a removable locating plug is used, the gap should be increased by the plug thickness.

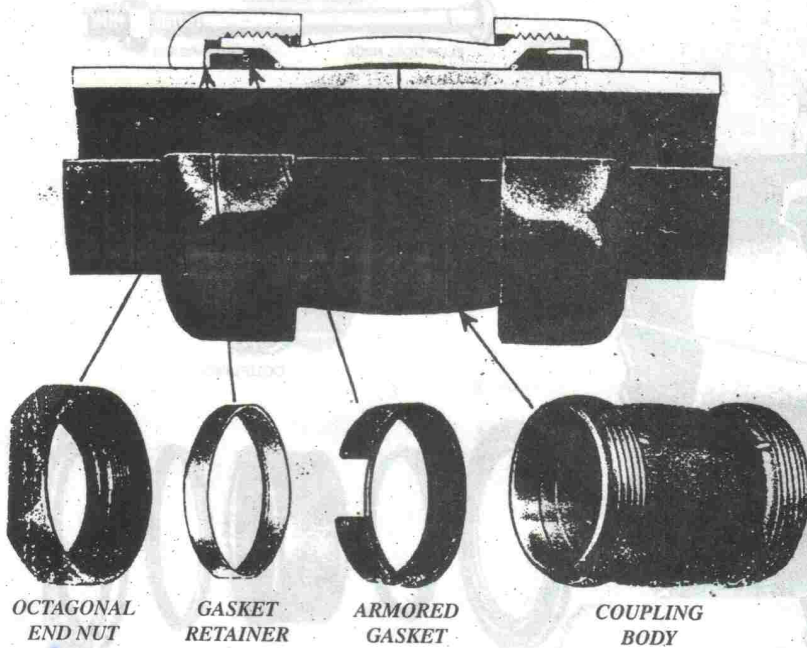
4) Slide gaskets and followers into place, making sure gaskets are pushed under middlring flare all the way round.

5) Insert bolts. Where a two-man gang is employed for tightening up, it will be found easier if every other bolt is installed with nuts facing opposite directions.

6) Tightening of bolts should be done progressively, drawing up bolts on opposite sides a little at a time. Retighten until all bolts have a uniform required torque.



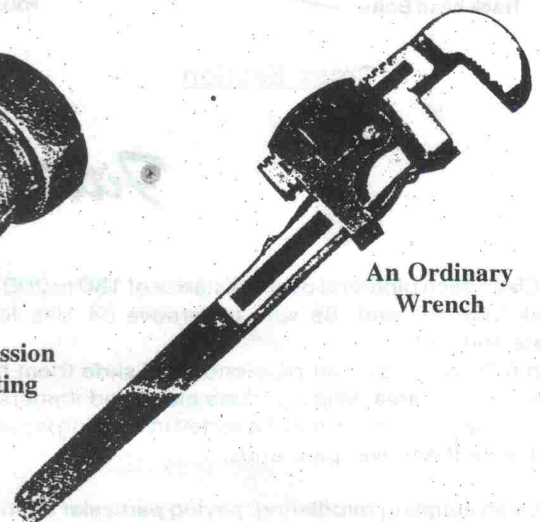
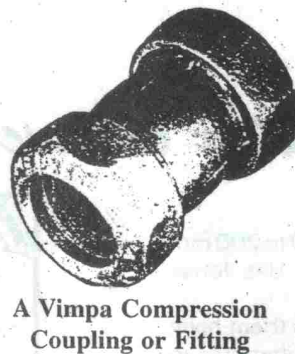
# Permanently Tight, Flexible Joints



**in**  
*"Less Than a Minute"*

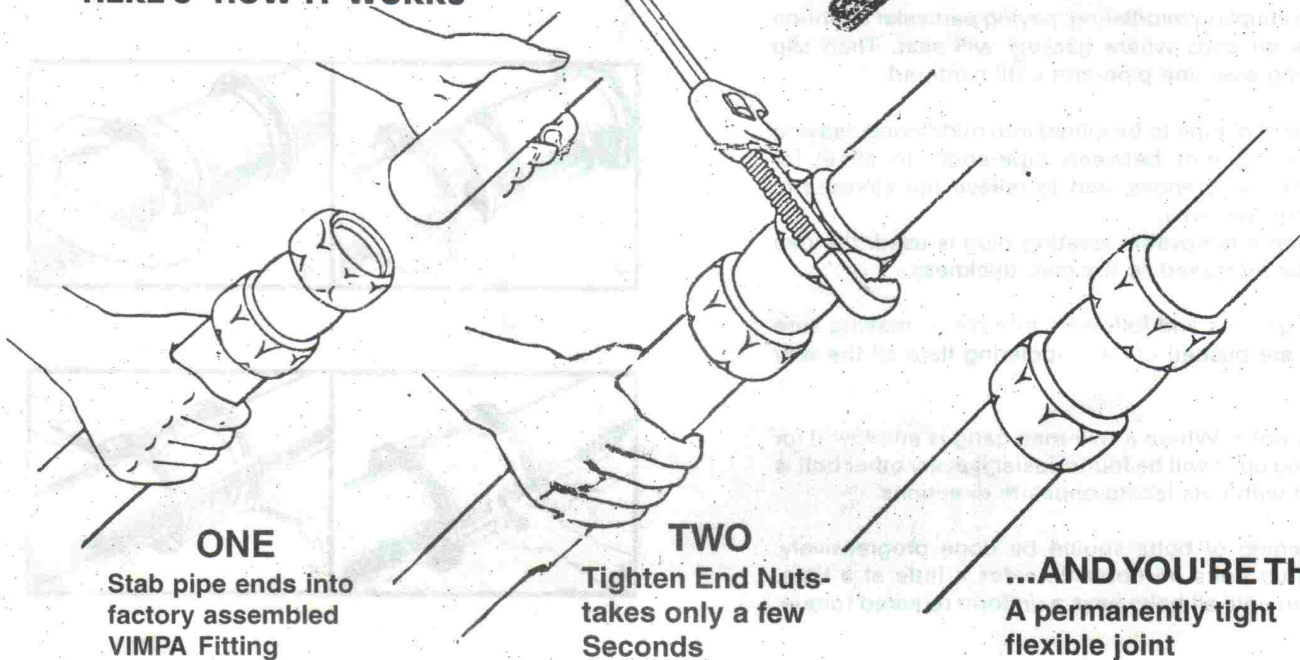
## HERE'S ALL IT TAKES

Plain-End Pipe--  
 No Threading  
 No Flaring  
 No Grooving



An Ordinary Wrench

## HERE'S HOW IT WORKS



**ONE**  
 Stab pipe ends into  
 factory assembled  
 VIMPA Fitting

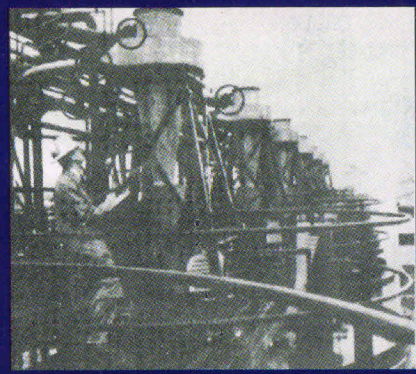
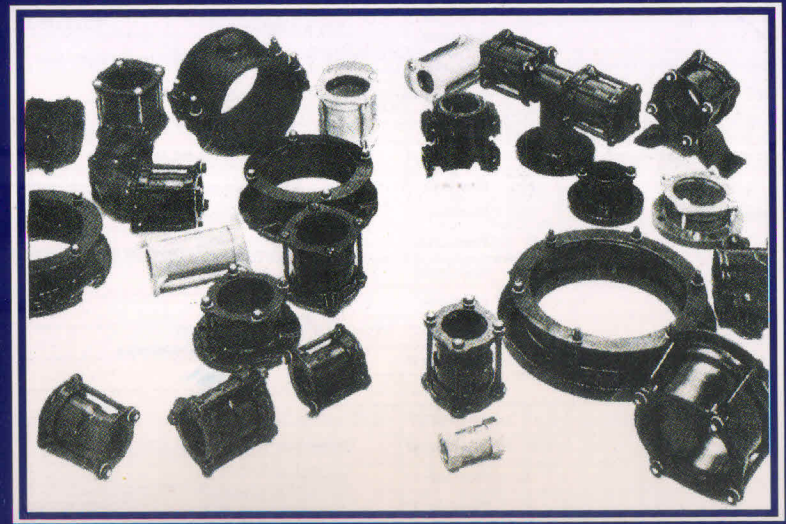
**TWO**  
 Tighten End Nuts--  
 takes only a few  
 Seconds

**...AND YOU'RE THRO**  
 A permanently tight  
 flexible joint

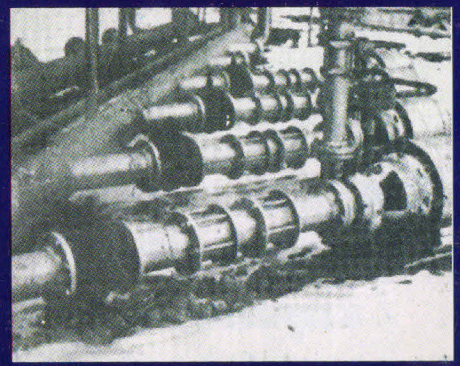
# Vimpa Pipeline Products *for every application*

Sleeves Couplings  
 Compression Fittings  
 Repair Sleeves  
 Flanged Adopter  
 Dismantling Joints  
 Expansion Joints  
 Other Pipe Lines Specials  
 Online Leak Repair Clamps

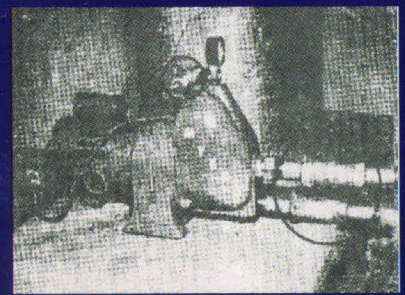
FOR FASTER ECONOMICAL, FLEXIBLE AND PERMANENT JOINING AND REPAIRING OF PIPES



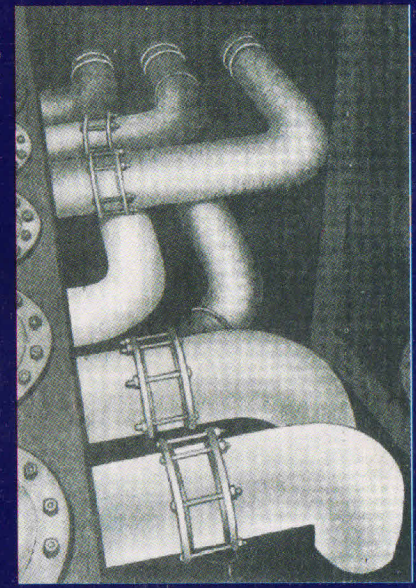
IN CHEMICAL INDUSTRY, IN-PLANT PIPING



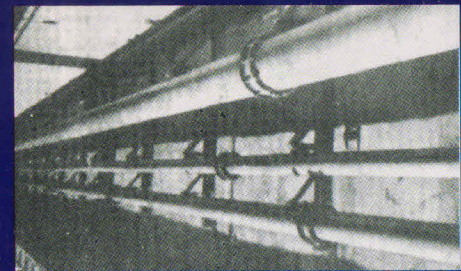
ON LARGE PUMPS CRUDE OIL & SLURRY PUMPS



ON SMALL PUMPS



ON-SHIPS, TANK PIPING



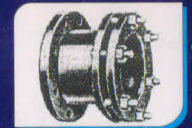
IN SEWAGE TREATMENT/WATER PLANTS



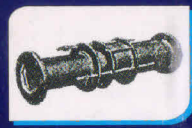
**Coupling**  
 Size Range : 15-2000 mm  
 NB & above



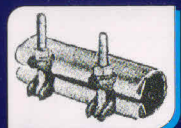
**Couplings for Internal Plumbing**  
 Size Range : 15-100 mm NB



**Flange Adopter & Dismantling Joints**  
 Size Range : 80-1000 mm NB



**Expansion Joint**  
 Size Range : 80-1000 mm NB



**Repair Clamp**  
 Size Range : 15-400 mm



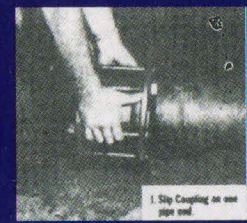
**Locking Coupling**  
 Size Range : 15-2000 mm



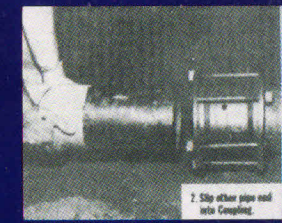
**Repair Sleeve**  
 Size Range : 50-600 mm



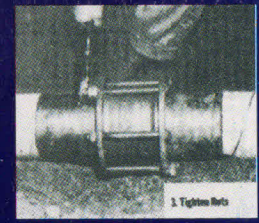
**Flange Adopter**  
 Size Range : 15-2000 mm



SHIP COUPLING ON ONE PIPE END



SLIP OTHER PIPE END INTO COUPLING



TIGHTEN NUTS

specialty compressed gaskets to make a permanent, flexible pressure tight seal within seconds.

Their unique flexibility permits:-

- ✦ Pressure up to 1500 psi. (105kg/cm<sup>2</sup>) and temperature upto 120°C and above.
- ✦ Parts conform to BS, ASTM and ANSI specs.
- ✦ Deflection up to 6° on individual section.
- ✦ Offset of pipe ends by 1/8".
- ✦ Variation of 1/4" on outside diameter of pipes to be joined.
- ✦ Problems of settlement.
- ✦ Vibrations.
- ✦ Expansion and contraction.

Of particular advantage is the built-in flexibility of (VMEC) Couplings, in long sleeves, which make them ideal as general utility connections.

### STEEL COUPLING FOR STEEL PIPE 3/8" THRO' AND LARGER SIZES

#### Specifications :

Pipe		Overall Dimensions		Working pressure pal	Item code for ordering	Approx. wt. in kg.	Material of Const.					Recommended Torque	
N.B. Size inch	Outside Dia (O/D)inch	Dimension in inch	Length in inch				MS/CS/MI/CI	MI/MS	C.I.	s.s.	P.P.	Wrench size inch	Pull in kg.
3/8	0.675	1.5	2.5	1500	0031	0.4	▲	▲	▲			10	35
1/2	0.840	1.5	2.5	1500	0041	0.5	▲	▲	▲	▲	▲	14	35
3/4	1.050	1.9	3.0	1500	0051	0.6	▲	▲	▲	▲	▲	14	35
1	1.315	2.2	3.5	1500	0061	0.7	▲	▲	▲	▲	▲	18	35
1.1/4	1.660	2.5	3.5	1500	0071	1.00	▲	▲	▲			18	35
1.1/2	1.900	2.9	3.5	1500	0081	1.4	▲	▲	▲			24	35
2	2.375	3.4	4.5	1500	0091	2.9	▲	▲	▲			24	35
2.1/2	2.875	6.5	5.25	1500	0101	3.5	▲	▲					
3	3.5	6.6	5.25	1500	0201	3.6	▲	▲					
4	4.5	7.5	5.2 5	1450	0301	4.5	▲	▲					
4.1/2	5.0	9.5	5.25	1250	0401	6.00	▲	▲					
5	5.563	9.675	5.5	1205	0501	8.00	▲	▲					
6	6.625	9.675	5.5	1020	0601	11.00	▲	▲					
8	8.625	11.675	5.5	800	0701	14.00	▲	▲					
10	10.75	14.675	7.5	600	0801	18.00	▲	▲					
12	12.75	16.75	7.5	500	0901	21.00	▲	▲					
14	14.00	18.00	7.5	450	1001	27.00	▲	▲					
16	16.00	20.00	9.5	450	1101	34.00	▲	▲					
18	18.00	22.00	9.5	400	1201	39.00	▲	▲					
20	20.00	24.5	9.5	350	1301	48.00	▲	▲					
22	22.00	26.00	9.5	350	1401	56.00	▲	▲					
24	24.00	28.00	9.5	300	1501	63.00	▲	▲					
30	30.5	34.5	12.5	250	1601	88.00	▲	▲					
36	36.5	40.5	12.5	250	1701	114.00	▲	▲					
48	48.75	53.75	12. 5	250	1001	151.00	▲	▲					

#### Product Conforms To:

◆ BS : 4368 Section A, for compression fittings ◆ BS : 4368 Part IV, for pressure testing. ◆ ASTM ANSI A 47-70 ) and ) For malleable castings ASTM/ ANSI A 49-76 ) and Grey iron castings. ◆ RS : 3003 part1 : 1957 for Rubber parts:

### APPLICATIONS

- |   |                           |   |
|---|---------------------------|---|
| 1. Industrial oil/Fuel Fired Furnaces           | 13. Cicut Breakers        | 26. Printing Presses                              |
| 2. Automatic Drinking Cup Fountains.            | 14. Conduits              | 27. Dishwashing machines                          |
| 3. Transformer Piping                           | 15. Construction          | 28. Brewers Machines                              |
| 4. Ash/ Slurry                                  | 16. Cutboard Motors       | 29. Brewers Machinery                             |
| 5. In- Plant Piping.                            | 17. Building Maintenances | 30. Intercom Systems. Equipment                   |
| 6. Fire Engines & Appratus.                     | 18. Bottle Washers        | 31. Air Conditioning & Refrigeration              |
| 7. Laboratory Piping (Hospitals).               | 19. Irrigation System     | 32. Car Washing Machines.                         |
| 8. Automatic Washing Machines.                  | 20. Dresser end Valves.   | 33. Appliance Hooks                               |
| 9. Hydraulic Machines.                          | 21. Dry Dock Piping       | 34. Food Machinery                                |
| 10. In Green Houses.                            | 22. Blowers               | 35. Ice Cream Machines                            |
| 11. Utility Piping (Gas, Water, Oil, Chemicals) | 23. Chemicals Feeders     | 36. Radiant Heating                               |
| 12. Firm.                                       | 24. Seperators            | 37. Tank Trucks                                   |
|   | 25. Ship's Piping         | 38. Manifold Piping of large Industrial Furnaces. |

Service	Type & Grade	Sodium Hypochloride	Plain Grade 27
Acetic Acid up to 10% concentration and up to 150°F	Plain Grade 27	Sulphuric Acid up to 40% concentration and up to 150°F	Plain Grade 27
Acetone (Dimethyl Ketone)	Plain Grade 27	Tannic Acid	Plain Grade 27
Air	Plain Grade 27	Vinyl Chloride in soap solution	Plain Grade 27
Alcohol, Ethyl, Isopropyl and Secondary Butyl	Plain Grade 27	Water, Fresh Salt, Acidic, Basic, Chlorinated	Plain Grade 27
Ammonia as gas or liquid up to 150° F	Plain Grade 27		
Butane	Plain Grade 27		
Calcium Acid Sulfite	Plain Grade 27		
Calcium Chloride	Plain Grade 27		
Calcium Hypochloride	Plain Grade 27		
Calcium Phosphate	Plain Grade 27		
Causitic Soda	Plain Grade 27		
Copper Cyanide	Plain Grade 27		
Diethylaniline	Plain Grade 27		
Ethylene Glycol	Plain Grade 27		
Gas, Natural (Including fogged)	Plain Grade 27		
Glycerin	Plain Grade 27		
Hydrogen Sulphide Gas	Plain Grade 27		
Mercury	Plain Grade 27		
Methyl Ethyl Ketone	Plain Grade 27		
Methyl Isobutyl Carbinol	Plain Grade 27		
Methyl Isobutyl Ketone	Plain Grade 27		
Nitrogen Gas	Plain Grade 27		
Potassium Cyanide	Plain Grade 27		
Sewage	Plain Grade 27		
Sodium Carbonate - Soda Ash	Plain Grade 27		
Sodium Chloride	Plain Grade 27		
Sodium Dichromate, not over 10%	Plain Grade 27		
Sodium Hydroxide	Plain Grade 27		

### SPECIAL RECOMMENDATIONS

Benzene	Armored Gr. 42
Carbon Tetrachloride	Armored Gr. 42.
Creosote Oil or Tar	Armored Gr. 27
Ethylene Dichloride	Armored Gr. 27
Gas, By product, manufactured (except highly sour)	Armored Gr. 27
Gas By- product, ,manufactured (Sour)	Plain Gr. 42
Gash Natural with Odorants	Armored Gr. 27
Gasoline, Regular, Ethyl and Aviation	Plain Gr. 42
Hexane Liquid	Armored Gr. 27
Jet Fuel	Plain Gr. 42
Methane (Marsh Gas, Fire Damp) 90 to 95% natural gas	Armored Gr. 27
Mineral Spirits	Armored Gr. 27
Oil, cured (Sour)	Plain Gr. 42
Oil cured (Sweet), fuel and lubricating	Armored Gr. 27
Perchloroethylene	Armored Gr. 42
Propane	Plain Gr. 42
Steam (Low Pressure & upto 212°F)	Armored Gr. 27
Styrene	Armored Gr. 27
Temperature over 212°F	Asbestos
Toluene	Armored Gr. 42

The above is a partial list. For unusual applications, consult

### HOW TO ORDER

1. Specify NB and OD of the pipe which coupling is to be used.
2. Pipe Material & Class : Steel, C.I., PVC, HDPE, Copper, Asbestos-Cement etc.
3. Service-water, Oil, Gas, air, Fuel, Chemicals Slue
4. Qty. and Type of fittings, Standard or extra long Couplings, Elbows-Tees etc.
5. Whether fittings are required to be shopcoated, galvanized or any other type of coating required.
6. Item code and detail code for Current Price List.
7. In unusual conditions, describe the pipe joining or repair problem in detail.

**Mfr:**  **Veepee Engineers**  
 123-A Ravindrappur, Varanasi - 221 005 (INDIA)  
 Cell : 00-91-9336902039, 9918102039  
 Tel : 00-91-542-2373390, 2373394  
 Fax : 00-91-542-2371258  
 Website : veepeeengineers.com .  
 e-mail : veepeeengr@yahoo.com

**Also Available at :**

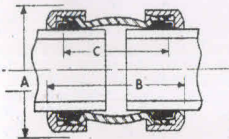
**Application:**

Water, Oil, Air, Fuel, Chemicals, Slurry, Brine, Acid and Alkali Solutions, Sewage, Refrigerants, gasolene, Gas nature, sweet or sour, gas by-product Gas manufactured, Cerosote, Oil, or Tar, Butane-Propane, Aromatic and aliphatic hydrocarbons, benzene, condensates, low pressure steam (up to 150° F) etc.



**"NO - THREAD" FITTINGS, STYLE 31**

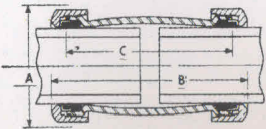
**SPECIFICATION :**



**Style 31 REGULAR COUPLINGS**

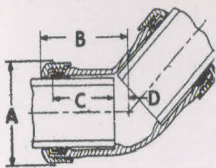
Nominal Steel Pipe Size (I.D.)	Straight Sizes						
	3/8	1/2	3/4	1	1 1/4	1 1/2	2
Out Diam. of Pipe (O. D.)	.675	.840	1.050	1.315	1.660	1.900	2.375
Item Code for Ordering	0031	0041	0051	0061	0071	0081	0091
Dimension A (See left)	1 3/4	1 7/8	2 1/8	2 5/8	2 9/8	2 13/8	3 1/2
Dimension B (See left)	2 1/8	2 1/4	2 5/8	2 9/8	3 1/8	3 5/8	3 7/8
Dimension C (See left)	1 1/8	2	2	2 1/4	2 1/2	2 3/4	3

**Style 31 LONG COUPLINGS**



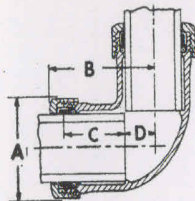
Nominal Steel Pipe Size (I.D.)	Straight Sizes					
	1/2	3/4	1	1 1/4	1 1/2	2
Outside Diam. of Pipe (O.D.)	.840	1.050	1.315	1.660	1.900	2.375
Item Code for Ordering	0041-L	0051-L	0061-L	0071-L	0081-L	0091-L
Dimension A (See left)	1 1/2	1 7/8	2 1/8	2 5/8	2 9/8	3 1/2
Dimension B (See left)	4 1/8	4 1/4	4 1/2	4 5/8	4 9/8	5 1/2
Dimension C (See left)	3 1/2	3 3/4	4	4 1/4	4 1/2	4 3/4

**Style 31 - 45° ELLS**



Nominal Steel Pipe Size (I.D.)	Straight Sizes					
	1/2	3/4	1	1 1/4	1 1/2	2
Outside Diam. of Pipe (O.D.)	.840	1.050	1.315	1.660	1.900	2.375
Item Code for Ordering	0041-S	0051-S	0061-S	0071-S	0081-S	0091-S
Dimension A (See left)	1 1/2	1 7/8	2 1/8	2 5/8	2 9/8	3 1/2
Dimension B (See left)	1 3/4	2	2 1/8	2 5/8	2 9/8	3 1/4
Dimension C (See left)	1 1/4	1 1/2	1 5/8	1 7/8	2	2 1/8
Dimension D (See left)	3/8	1/4	5/16	3/8	7/16	1/2

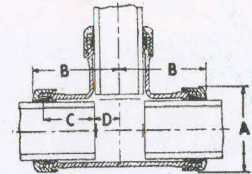
**Style 31 - 90° ELLS**



Nominal Steel Pipe Size (I.D.)	Straight Sizes					
	1/2	3/4	1	1 1/4	1 1/2	2
Outside Diam. of Pipe (O.D.)	.840	1.050	1.315	1.660	1.900	2.375
Item Code for Ordering	0042	0052	0062	0072	0082	0092
Dimension A (See left)	1 1/2	1 7/8	2 1/8	2 5/8	2 9/8	3 1/2
Dimension B (See left)	2 1/8	2 1/4	2 5/8	3 1/8	3 5/8	3 7/8
Dimension C (See left)	1 1/4	1 1/2	1 5/8	1 7/8	2	2 1/8
Dimension D (See left)	1 5/8	1 3/4	2 1/8	2 1/4	2 1/2	2 3/4

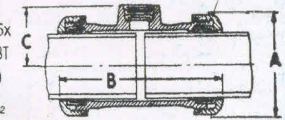
**Style 31 - 90° TEES**

Nominal Steel Pipe Size (I.D.)	Straight Sizes					
	1/2	3/4	1	1 1/4	1 1/2	2
Outside Diam. of Pipe (O.D.)	.840	1.050	1.315	1.660	1.900	2.375
Item Code for Ordering	0043	0053	0063	0073	0083	0093
Dimension A (See right)	1 7/8	2 1/8	2 5/8	2 9/8	2 13/8	3 1/2
Dimension B (See right)	2 1/8	2 1/4	2 5/8	3 1/8	3 5/8	3 7/8
Dimension C (See right)	1 1/4	1 1/2	1 5/8	1 7/8	2	2 1/8
Dimension D (See right)	1 5/8	1 3/4	2 1/8	2 1/4	2 1/2	2 3/4



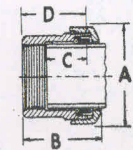
**Style 31 THREADED-BRANCH TEES**

Nominal Steel Pipe Size on Run (I.D.)	Straight Sizes									
	1/2 x 1/2	3/4 x 3/4	1 x 1		1 1/4 x 1 1/4		2 x 2			
Branch-Outlet Size (I.D.)	1/2	3/4	1	1 1/4	1 1/2	2	2 1/2	3	3 1/2	4
Outside Diam. of Pipe (O.D.)	.840x	1.050x	1.050x	1.050x	1.315x	1.315x	1.660x	1.660x	2.375x	2.375x
Item Code for Ordering	0043-BT	0053-BT	0063-BT	0063-BT	0063-BT	0063-BT	0073-BT	0073-BT	0093-BT	0093-BT
Dimension A (See right)	1 1/2	1 7/8	2 1/8	2 1/8	2 5/8	2 5/8	2 9/8	2 9/8	3 1/2	3 1/2
Dimension B (See right)	4 1/8	4 1/4	4 1/2	4 1/2	4 5/8	4 5/8	4 9/8	4 9/8	5 1/2	5 1/2
Dimension C (See right)	1	1 1/8	1 1/8	1 1/8	1 13/32	1 13/32	1 3/8	1 3/8	2 1/8	2 1/8



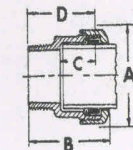
**Style 31 - FEMALE ADAPTERS**

Nominal Steel Pipe Size on Run (I.D.)	Straight Sizes				
	3/4	1	1 1/4	1 1/2	2
Outside Diam. of Pipe (O.D.)	1.050	1.315	1.990	1.660	2.375
Item Code for Ordering	0051-FA	0061-FA	0071-FA	0081-FA	0091-FA
Dimension A (See right)	1 27/32	2 27/32	2 5/8	2 15/16	3 15/32
Dimension B (See right)	1 15/16	2 1/8	2 1/8	2 19/32	3 1/16
Dimension C (See right)	1 1/32	1 5/16	1 5/16	1 13/32	1 9/8



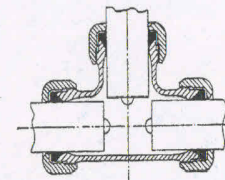
**Style 31 - MALE ADAPTERS**

Nominal Steel Pipe Size on Run (I.D.)	Straight Sizes					
	1/2	3/4	1	1 1/4	1 1/2	2
Outside Diam. of Pipe (O.D.)	.840	1.050	1.315	1.660	1.900	2.375
Item Code for Ordering	0041-MA	0051-MA	0061-MA	0071-MA	0081-MA	0091-MA
Dimension A (See right)	1 17/32	1 7/8	2 1/8	2 5/8	2 9/8	3 1/2
Dimension B (See right)	1 11/16	2 1/8	2 1/8	2 11/16	3 1/8	3 1/8
Dimension C (See right)	1 1/4	1 1/4	1 15/32	1 1/8	1 7/8	1 3/8



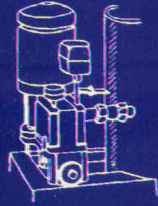
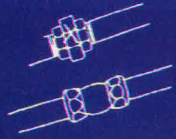
**Style 31 - TEES (ALL ENDS) - Malleable**

Nominal Diam. of Pipe (ID)	PIPE (STEEL)		Item Code for Ordering
	Outside Diameter (OD)		
3/4 x 3/4 x 3/4	1.050 x 1.050 x 1.050		0053-MAT
1 1/4 x 1 1/4 x 1 1/4	1.660 x 1.660 x 1.660		0073-MAT
2 x 2 x 1 1/4	2.375 x 2.375 x 1.660		0093-MAT



## Typical Use

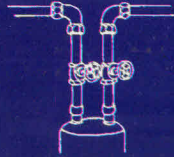
**To join pipe better than a union**  
VIMPA couplings are superior to unions. They eliminate threading, exact pipe cutting, corrosion of threads. They absorb vibration and accommodate misalignment.



**To replace hose connections**

Hose connections eventually split or fall in service. VIMPA Couplings give tight, permanent, streamlined connections.

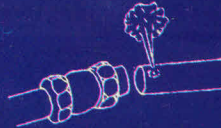
**To simplify cleaning and repair**  
Where periodic cleaning of piping is necessary, disassembly is easy at any point. Many lengths of pipe need not be disconnected for repairs.



**For quick cut-ins**

Connections for appliances, faucets, or branch lines can be cut-in quickly since VIMPA eliminate pipe threading, exact pipe lengths, unions.

**To join misaligned pipe**  
Since each fitting allows up to 6° deflection, joining of misaligned pipes is simplified.

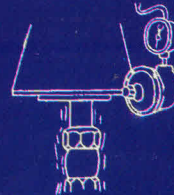
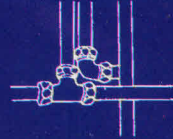


**To repair leaks**

Cut pipe at leak, slip pipe ends, slip on a VIMPA coupling, side back over cut, tighten end nuts-you have a permanent repair.

**To join or repair pipe in close quarters**

VIMPA Fittings can make the job easy in places too crowded to use threaded fittings.

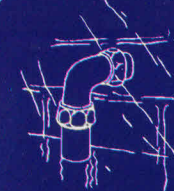
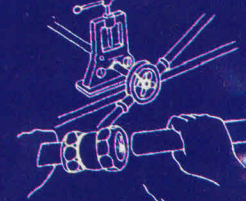


**To absorb vibration**

The resilient gaskets absorb all normal vibration, deflection and movements of the pipe... preventing stresses that often cause failure.

**To save time-no pipe threading or exact pipe lengths**

Most piping jobs can be finished in a fraction of the time required where threaded joints are used.

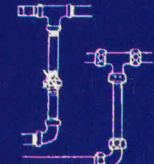
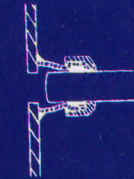


**For outdoor piping**

Where corrosion of threads on outdoor piping has been a problem, VIMPA Fittings offer long-term corrosion resistance, because full wall thickness of pipe is retained.

**To make economical outlets on tanks, walls pipes**

Style 90 Couplings can be cut in half and the body welded to a pipe, a tank, or a well. The VIMPA end provides an easy way to connect plain-end pipes.



**To eliminate ground-joint unions**

Since pipe can be turned in a VIMPA fitting before tightening, a union can often be eliminated.

## USES :

Automatic Drinking Cup  
Fountains  
Fire Engines & Apparatus  
Conduits  
Intercom Systems  
Laboratory Piping (hospitals)  
Outboard Motors  
Printing Presses  
Construction  
Dishwashing Machines  
Refrigeration Equipment  
Irrigation Systems  
Air Conditioning Systems  
Dresser end Valves  
Brewers' Machinery  
Car Washing Machines  
Bottle Washers

Farm Machinery (tractors etc.)  
Blowers  
Utility Piping (gas, water)  
Automatic Washing Machines  
Circuit Breakers  
Food Machinery  
Tank Trucks  
Appliance Hookups  
Ship's Piping  
Hydraulic Machines  
Ice Cream Machines  
Separators  
In Green Houses  
Radiant Heating  
Chemical Feeders  
Dry Dock Piping

Mfgr:



**Veepee Engineers**

123-A Ravindrapuri, Varanasi - 221 005 (INDIA)

Cell : 00-91-9336902039, 9918102039

Tel : 00-91-542-2373390, 2373394

Fax : 00-91-542-2371258

Website : veepeeengineers.com

e-mail : veepeeengr@yahoo.com

**ALSO AVAILABLE AT :**



## List of Plant and Machinery

Sr	Description	Machine Spen	Usage	YEAR OF manufacturing	REMARK
1	CNC Plasma Cutting Machine	Plasma =50MM Oxy Fuel =90MM Bed size 2.8 X 7.2 Mtr	Cutting of M.S Sheet and Plates upto 50 MM	2015	
2	CNC Fiber Laser Machine	Bed Size 5' X 10' Kw	1.5 Cutting of M.S /S.S Sheet and Plates Upto 12 MM	2020	
3	CNC Laser Marking Machine – 04 Colour	0.8 Kw	Marking	2021	
4	Hydraulic Shear	8 T X 3000	Straight Line Cutting	2014	
5	Hydraulic press brake	8T X 3000	Angular and straight line Bending	2014	
6	Hydraulic Power Press	400 T Window 5' X 5' Upto 75 MM Thick	Bending, Straighating and Forming	2005	





7	Rolling/straightening machine	30MM X 2500MM	Plate bending and Straighting	2013	
8	TIG welding machine	400 Amp/500 Amp	Steel & MS welding	2015	
10	MIG/MAG welding set	400 amp/500 amp	Steel & MS welding	2015	
11	Drill machine	Upto 50mm	Hole Drilling	2013	
12	EOT Crane	5 Ton	Lifiting , Loading , Handling and unloading	2015	

13	Lathe machine	10' size and 5' Size	Machining	2008	
17	Painting compressor & gun	Model 2475/5 HP/24 CFM	Painting and Air	2015 & 2021	
19	Radial Drilling machine	Upto 80 mm dia	Drilling of Big Holes	2009	
20	Tool grinder	upto 20 MM	Hole and Corner Cleaning	2008	
21	Do-All Hydraulic Machine	20 MM X250 Sheet and 38 MM Sq or 100 X 100 angle	Cutting of Angle , Channel , Sq Rod and Forming	2014	
22	SPOT Welding Machine	200 Amp U	Spot Welding of Upto 3 MM S.S / M.S.	2009	

26	Thyristor based DC welding Machine	300 Amp	Welding	2013	
29	Generator Set	40KVA	Electricity Genration	2010	
30	Heavy Duty Disc Grinder	2.5 KW	Grinding	2018	
31	Weel Cut-off Machine	2.5 KW	Cutting of Section	2018	
37	Gas Cutting Set	Upto 50MM	Gas Cutting	2015	
38	Profile Gas Cutting Machine	1' X 1.5 Meter - 100 mm	Profile Cutting	2010	

39	Power Press	100 T	Punching and Blanking	2012	
40	Band Saw Machine	175 MM Dia	Cutting	2009	
42	PUG Cutting Machine	Upto 90 MM	Straight Line Cutting	2008	
50	Buffing/Sanders	3.5 HP	Buffring and polishing	2020	
51	Trolley for Carry material	1 TON	Transpoting Goods	2018	
57	Bench Vice	12" inch	Holding Small job	2019	


58	Working Table (For Elec Works)		For Electrical working		
59	Powder Coating	4 x20 Ft	For powder Coating	2020	
60	Cable Cutting and Dressing Tool	Adequate	Crimping and cutting of elec wire cable.	2022	
61	Bead Making Machine	24" Dia	making bead	2022	
62	Etching Machine	24" Dia	for marking on sheet and plates	2022	




63	Double action deep draw Hydraulic Press	250 Ton	for bending	2022	
64	Set for Automatic welding of S.S	24" Dia	welding on SS Sheet	2022	
65	Rolling setup for cylinder	upto 2 MM Thick	Rolling of sheet	2022	
66	Water Spray Arrangement	Pressure Max 90 Bar Water consumption 6.5 L	Spraying Water	2022	

## Measuring and Testing Instruments




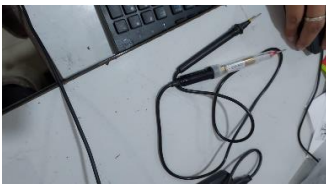


Sr	Description	Machine Spen	Usage	YEAR OF MFG	REMARK
1	Steel Scale	0-1000 MM	Measuring	2016	
2	Steel Scale	0-300 MM	Measuring	2016	
3	Measuring Tape	0-3000 MM	Measuring	2018	
4	Digital Caliper	0-150 MM	Measuring of Thickness and min tol dim	2016	
5	Micrometer	0-1 Inch	Measuring of Thickness and min tol dim	2010	
6	Thread Plug Gauge	M10 x 1.5-6H	Checking thred Size of hole	2020	
7	Coating thickness Gauge	0-250 Micron	Measuring of Coating Thk	2021	



8	Pressure Guage	0-70 Kg	measuring Hyd Pressure	2008	
9	DPT		Crack detection	2022	
10	Vernier Caliper	0-8 Inch	Measuring of Thickness and min tol dim	2016	
11	Sprit Level		Level of surface	2020	
12	Tri-Square		For Check 90 degree angle	2018	

13	Inner / Outer Caliper	Upto 25 Inch	For Inner outer dim check	
14	Weight Machine	Upto 10 Ton		
15	Hammer			

## Electrical Equipment's for Testing and Measuring

1	High voltage Tester	Suitable	Testing of Voltage		
2	Mili Voltmeter	Suitable	Testing of Voltage	2021	
3	Dig Insulation Tester	2000 MΩ	testing of insulation	2022	
4	Continuity Tester	Suitable	testing of continuity	2021	
5	Regulated DC Source	0-200 V DC		2022	
6	Digital Clmap Meter	Suitable	testing of AC / DC voltage	2012	
	Analog Mulimeter	Suitable	testing of AC / DC voltage	2018	
7	Test Panel ( Voltmeter , Ammeter , wattmeter , Frequancy meter , Power factor Meter A.C)	Suitable			

<b>Inspection Item</b>				
<b>1</b>	Tool Surface Plate	Tie Up with NABL Approved Lab		
<b>4</b>	Physical, metallurgical (spectrometer), chemical & rubber testing	available at Banaras Hindu university and BLW (government approved test lab). Also NABL approved M/s spectro test lab at kanpur		
<b>Foundry Unit</b>				
<b>1</b>	TIE UP WITH STEEL CASTING UNIT & MALLEABLE CASTING UNIT (BOTH THE ABOVE ISI APPROVED)			
<b>2</b>	TIE UP WITH FOUNDRY UNIT, WITH PATTERN SHOP & ALL RELATED SECTIONS			
<b>3</b>	STRESS RELIEVING FURNACE AND SHOT BLASTING MACHINE, ANNEALING FURNACE AVAILABLE IN THE INDUSTRIAL COMPLEX.			
<b>4</b>	All Suitable tools for Assembly are ready available as is evidence from our products like Electro Pressurized Flushing arrangement, Bio-Toilet , Door Assembly etc			



# राष्ट्रीय लघु उद्योग निगम लिमिटेड

## THE NATIONAL SMALL INDUSTRIES CORPORATION LIMITED

S.No. NAI/00035-8

Branch Office : Branch Office, Naini Industrial Estate, Indrayog Nagar, Naini, Allahabad - 211008  
Ph : 0532-2897050 Fax : 0532-2897218  
Email : [booffice@nsic.gov.in](mailto:booffice@nsic.gov.in) Website : [www.nsic.co.in](http://www.nsic.co.in)

137466

Sr. No.

Renewal Certificate (Valid From 23/02/2020 to 22/02/2022)  
ANNEXURE TO GOVERNMENT PURCHASES ENLISTMENT CERTIFICATE

N.O. NSIC/GP/AR/2017/0030438 D.T. 02/03/2020

ISSUED TO M/s. VEEPEE ENGINEERS, UTTAR PRADESH

### STORE DETAILS CERTIFICATE

225/1, Maheshour Industrial Estate, VARANASI, UTTAR PRADESH-221108

Srno	Store(s)/ Service(s) Name	Specification(s)	Qualitative Capacity	Quantitative Capacity PM
1	VMPA Make Flexible Compression Plug Coupling - Sleeve Coupling, Plug Repair Clamps & Repair Sleeve, 'D' Type Dresser Flexible Pipe Coupling	PL No. 11325138, 11325033, 11325082, 11325094, 11325100, 11325239, 11325240, 11325290, 11325630, 11325197, 11325203, 11325284, 11325720, 11325150, 11325227, 11325135, 11325136, 11493310, 11325460, 60401068, 60401067, 60401068, 60401069, 60401070, 11325588, 60402019	As per Indian Railway Drg. no./Spec. CI/VCA-23, B2V00BC00B00, 11325630, TPL-0243, TPL-0244, 60401570, 604015, 60402019, TPL-2540, TPL-0320, TPL-0557, TPL-0242, TPL-0328, TPL-0245, Size 3/8", 1/2", 3/4", 1", 1 1/2", 2", 3", 4" Up to 48"	15 M T OR
2	Front Sheet, Set of Ceiling Sheet Arm. For ACT2 EO, Set of Ceiling Sheet Arm. for LHB, Set of Ceiling Sheets for AC3T EOG LHB (MOT5)	PL NO. 335682070, 33550037, 33557287, 33030181, 33562836, 33502949	As per Indian Railway Drg. no./ Spec. RDSO/SPEC C-8217 REVISION 02 2 10113.0.20.200.104, LE16113, MOT5-096 MPLCES2TEL VERSION 5, MPLCESLJSCZAC VERSION 2, MPLCES3TEL VERSION 12	03 M T OR
3	Gear Case Assy. For WDM2, YDM4 EMU Coaches, Elec.Loco.	PL NO. 11013066, 12860185, 12977433, 12989113, 12995034, 12981648, 1208972, 1030493, 12090283, 12084190, 12084293, 12087841, 12977433, 12989113, 12885034, M7147566006, M7183716001, M7197017908	As per Indian Railway Drg.no./Spec. 1430164130V00, 1438160100V00, G-4015588, 4615388, SK DP-388, G-4515084, 14381641001, G-4515078, SKDP-388, SKDP-388B, 40056896, all types of elec loco like WAG AND WAP etc	15 M T OR
4	Electro Pneumatic Pressurized Flushing System Pressurized Flushing System, Rubber Dust Guard, Dust Guard All Types	PL NO. 12083961, 1208406, 33615081, 33793147, 4377NS1, 33616239, 33990484	As per Indian Railway Drg.no./Spec. ICF MD SPEC 340 SKDP-3365 MCF MD 32219, MOT5 24317, MOT5 26001,	500 NOS OR
5	Reservoir/Main Reservoir Assy. Ball. Flap Door For Wagons	PL NO. 17450066, 17404517, 17456228, 17451140, 25140860	As per Indian Railway Drg.no./Spec. 40054147, 10982293, 9328376, 400541147	5 M T OR
6	Cattle Guard/Pilot Modified Cattle Guard, Cow Catcher For WDM2, YDM/WDS 6, Elect. Loco & EMU Pilot And Pilot Support Application/Assembly Set of Support For WAG	PL NO. 11030315, 11030830, 11031414, 11032976, 11033617, 11036898, 11531356, 11533134, 11533195, 11614040, 11686096, 10990207, 17032969, 17062821, 17980252, 17060284, 16882272, 16982277, 11036892, 11614044, 12917020, 17036963, M7181013014, 17035908, 11533377, 11030892, 11533134, 11533185, 11662272, 16602277, 17980264, 29612871	As per Indian Railway Drg.no./Spec. TPL-1018, 2DM/WAG-838, SKDL-4131, RDSO/SKDL-4130, SKDL-4132, SKDL-4633, 1153377, TPL-3373, SK-927, TPL-0788, TPL 1016, SCRDSL/BE-1002, D-17032866, SKDL-4237, 17032969 NDLA/TR-105	15 M T OR
7				

M/s. VEEPEE ENGINEERS



of the certificate can be checked through the web portal: [www.nsicsonline.com](http://www.nsicsonline.com)



CIN : U74140DL1955GOI002481



# राष्ट्रीय लघु उद्योग निगम लिमिटेड

THE NATIONAL SMALL INDUSTRIES CORPORATION LIMITED

S. No. NAI/0000618

Branch Office : Branch Office, Naini, Industrial Estate, Udyog Nagar, Naini, Allahabad - 211009

Ph : 0532-2697050

Fax : 0532-2697218

Email : [boai@nsic.gov.in](mailto:boai@nsic.gov.in) / [boai@nsicprnline.com](mailto:boai@nsicprnline.com)

137467

Sr. No.

<p>Sand Box, Sand Box Assy Kit For Side Sil Assy Capactor Box Assembly Pivot Ring Cat No R90093 C. Feeder Junction Box, Junction Box Assy &amp; Body Side, Terminal Box Cat.No. R9V, Centre Sil Complete For WAP- T.M Hollow Mounting</p>	<p>PL NO. 11025888, 1, 10632897, 10634045, 10632192, 29171052, 29070259, CAT NO. 26771043, 29100392, 28200052, 28611179, 26120317, 29040345, 33636031, 33640560, 37980044, 33835031</p>	<p>As per Indian Railway Drg.no./Spec 10833403, 11028420, 11025888 TPL - 5345 SK 0775</p>	<p>100 NOS OR</p>
<p>8 Angle &amp; Sealing Angle (RH &amp; LH) Sealing Angle, Angle (LH) Angle (RH), Al Mounting Ex Unseq Angle, Set of Angle For LHB Non AC Coach, Set of Ceiling Angle For LHB SCN EOC Coaches</p>	<p>PL NO 37887446, 33553877, 33570760, 35981891, 33800340, 33554470, 33690923, 33690510, 33690522, 35982240, 33595331, 33574340, 33581678</p>	<p>As per Indian Railway Drg.no./Spec.CC43355, 3 10113.0.03.210.101, LG10188, LG10199, 2 10113.0.21.500, LG11110, LG14112, RCF-RDL-DRG-86, RCF-RDL DRG-85, MP13ANGLE VERSION 0, MPLCEA2TEL VERSION 3, MPLCALWSCN VERSION 2, MPLCOA3TL</p>	<p>2.91 M.T OR</p>
<p>9 Angle &amp; Angle Assembly/Angle Train, Sealing Angle, Grill Assy.(Protection Grill For Roof Assy Complete Cat No.R9</p>	<p>PL NO. 17030985, 17052950, 17082873, 17124190, 17124219, 17124475, 17124487, 17124645, 17125405, 17125725, 17127440, 17128043, 17128900, 17129382, 17129589, 17150541, 17150581, 17150723, 17125881, 33690923, 10632541, 37587448, 33553877, 33570760, 35981891, 33600340, 33554470, 33690510, 33690522, 35982240, 33595331, 33574340, 29175483, 29170841</p>	<p>As per Indian Railway Drg No./Specs.10833202, 10635488, 10633789, 10332857, 108323210, 10633010, 10832465, 10832645, 10633103, 10835782, 10835145, 10632541, 10836180, 10833832, 40037225, 10833656, 10635781, 10644654, 8407807, 8219685, LG14112, EMD PT NO. 10632541</p>	<p>0.3 M.T OR</p>
<p>10 Battery Box, Modified Battery Dux. Battery Box For LHB Coaches, Pallet, All Type. Battery Box Complete General Battery Box Assembly, Battery Box Mounting, Battery Fuse Box Bin, Waste Bin</p>	<p>PL NO. 11531344, 11537220, 17032670, 17032740, 33650184, 17030882, 17035784, 10661399, 29680013, 33550184, 33950421, 33650184, 33550421, 33840786, 33640178</p>	<p>As per Indian Railway Drg.no./Spec. 111521344, TPL-3572, 374V26640, 17032740, 10661444, 11537220, 310113.0.78.700.035, CDS1205, 10661500, 17035784, 10832153, 17032106</p>	<p>4.91 M.T OR</p>
<p>11 Bracket, Anti Roll Bracket, Bearing Bracket For Berth Cum Backrest Pain, Bracket Complete, Bracket (SG), Bracket Complete For LHB Coach, Bracket For Fixing of Luggage Rack For AC31, Bracket For LHB Coach, Lamber Bracket,</p>	<p>PL NO. 33500514, 33500536, 33568547, 33590104, 33555455, 33503590, 33613357, 33660368, 35882445, 35882573, 35882585, 35882457, 33510340, 33510052, 33510082, 33511195, 33511202, 33550281, 33555988, 33594120, 33600023, 33600240, 33690380, 33690811, 33690859, 33690998, 33691230, 33598174, 33510864, 33555904, 33598828, 33500782, 33510867, 33513140, 33501555, 33500663, 33694700, 33555746, 33554092, 33510775, 33555801, 33555400, 33891048, 33557421, 33880044, 33600058, 35880620, 33663700.</p>	<p>As per Indian Railway Drg no./Spec. 1287541 VER. 01, MP13UFPCAR VERSION 2, MPLBKHYPC VERSION 7, MP081F VERSION 3, MPBRCOLHB VERS ON 2, MPLBKTWT30 VERSION 1, MPLBKDLHB VERSION 2, MP1LBRKTOC VERSION 1, MPOURRLHB VERSION 1, EL/BK/LWACOW VERSION 1 OR LATEST, FL/BKTLWACCN VERSION 1 OR LATEST, MP13FDR14 VERSION 0, LE44225, LE63243, LE63228, 2 10113.0.10.320.101, 2 10113.0.22.343.104, 2 11012.0.76.095.089, 3</p>	<p>0.88 M.T OR</p>

## STORE DETAILS CERTIFICATE

M/s. VEEREE ENGINEERING



Authenticity of the certificate can be checked through the web portal: [www.nsicprnline.com](http://www.nsicprnline.com)



CIN : U74140DL1955GOI002481



# राष्ट्रीय लघु उद्योग निगम लिमिटेड

THE NATIONAL SMALL INDUSTRIES CORPORATION LIMITED

S. No. NA/0000518

Branch Office : Branch Office, Naini, Industrial Estate, Udyog Nagar, Naini, Allahabad - 211008

Ph : 0532-2697050

Fax : 0532-2697218

Email : [booffice@nsic.co.in](mailto:booffice@nsic.co.in) [www.nsic.co.in](http://www.nsic.co.in)

Sr. No. 137468

## STORE DETAILS CERTIFICATE

	Horizontal Damper Bracket, Set of Bracket & Plate For LHB Power CAR, Support & Supporting Bracket, Set of Electric Bracket, Set of FDR Bracket For LHB Tail Lamp Bracket, Roll Link, Back Piece	33613206, 33613280, 33555888, 33500828, 29615315, 33583905, 33593899, 33595028, 33880200, 33580615	11012.0.76.095.093, 3 10113.0.76.095.076, 3 10113.0.76.095.077, 3 10113.0.08.095.056, 3 10113.0.29.200.003, 2 11012.0.08.095.027, LE36134, 3 10113.0.08.065.002, LE44190, LW05118, 3 10113.0.09.095.026, 3 10113.0.30.095.056, LW05117, LW0215, LP36143, 3 10113.0.76.095.003, 2 10113.0.25.320.002, 3 10113.0.30.065.156, 3 10113.0.30.065.077, LE63158, LW4346, 4 10113.0.03.065.142, LW1146, SE61419, LW05123, 1287537 VER. 00, 1287511 VER. 00	
12	Bracket & Bracket Asm, Mounting Bracket Bracket Complete, Bracket Asm For Lhb Coaches, Damper Bracket All Types, Kit For Bracket Asm over, Set Of Bracketed Steel	PL NO 33550223, 33511070, 33550281, 35960202, 33504179, 3042350, 29129990, 29171015, 29818469, 29180077, 33682434, 33555748, 35084107, 33510775, 33565826	As per Indian Railway Drg.no./Spec.10633084, 10624157, 10634522, 10634057, 10634103, 10634011, 10632478, GM PT NO, 10632038, CG-15033, 10634012, CG-15034, LE11310, 10634103, LW36133, GM PT NO.10600631, LE10175, 11246696, 10634057, 17083369, MPCHANELAC3TLHE VERSION 6, MPCHNAC3TLHB VERSION 3,	01 M.T OR
13	LChannel & Channel Asm, Channel Sleepers And Fitting All Types, Dip Rail Channel Kit set of Channel Asm. For Axler LHB Coach, Skirting	PL NO 33680170, 29109998, 29109870, 33680170, 30101268, 33583603, 33594845, 33980803	PL NO 33690170, 29109963, 29109870, 33690170, 30101265, 33593893, 33584843, 33980883	0.23 M.T OR
14	Set of Clips Cat. No. P/00, Kit -16 For Clamp Asm & C, Clamps Cat No. 86/0013 C&D, Clamp & Pad Cat No. 85/00, Clamp Assy (For WAP-7)	PL NO 29612856, 29210010, 26210094, 29210138, 29180077	PL NO 29612858, 29210010, 29210994, 29210130, 29180077	0.8 M.T OR
15	Centering Disc, Centering Disc For LHB Coach, Centering Disc For Primary Suspension	PL NO.33500323, 33500174, 33500295, 33500605, 33500084, 33594247	As per Indian Railway Drg no./Spec. LG06103, 1288840, 1268599, 1262875, 1902431, LW44139	0.02 M.T OR
16	Cover & Cover Asm Door & Door Asm All Types, Set Of Cover For WAG-9	PL NO.33593203, 29610242, 33595045, 33595057, 33596738	PL NO. 33566203, 29610242, 33595045, 33595057, 33558798	0.4 M.T OR
17	Equipment Rack Frame Asm, Exhaust, Duct Asm/Exhaust Stack Asm, Hand Brake Assy (For WAP 7), Air	PL NO. 17050510, 17455625, 25140050, 33092558, 33590712, 33593036	As per Indian Railway Drg.no./Spec 10634303	0.16 M.T OR

M/s. VEERDE ENGINEERS



Authenticity of the certificate can be checked through the web portal: [www.naicsonline.com](http://www.naicsonline.com)



CIN : U74140DL1955GOI002481



# राष्ट्रीय लघु उद्योग निगम लिमिटेड

## THE NATIONAL SMALL INDUSTRIES CORPORATION LIMITED

S.No. NAI-000018

Branch Office : Branch Office, Naini Industrial Estate, Udyog Nagar, Naini, Allahabad - 211009

Ph : 0532-2697080

Fax : 0532-2697218

Email : [boanaini@nsic.gov.in](mailto:boanaini@nsic.gov.in) / [nsic@nsic.gov.in](mailto:nsic@nsic.gov.in) / [www.nsic.gov.in](http://www.nsic.gov.in)

Sr. No. 137469

18	Under Frame Arrangement Floor Frame Assy/ Kit For Modified Floor Frame Brigs Frame Arngt. Fuel Oil Filter, Lube Oil Filter, Set of Filter Frame Asm. Central Under Frame Assy. Filter Assy Cal No R/9/0014	PL NO. 17034334, 17047535, 17033068, 29480115, 29129305, 17033755, 29480103	As per Indian Railway Drg.no./Spec.11534175, 11535313, 10632283, 10632261	0.25 M.T OR
19	Fuel Tank, Water Tank Complete With Upper & Lower, Water Tank Asm. (RH & LH)	PL NO.33550141, 335512742, 33553830, 33554754, 33550141, 33550300, 33554863,33552538, 17051265,33553830, 17031291, 17032155, 33612390, 33890084, 11329324, 17050813, 18862272, 17051498, 33810502, 30636803, 33612742, 33550300, 33554663, 33553830	As per Indian Railway Drg.no./Spec. CC63138, LW63150, LP63117, LP63138, CC63136, LG83108, LG83105, LP63117, MI005710, MI005711, 533V-408944, 602 251 000.001, spec. MDT8.100	0.47 M.T OR
20	Mounting Tank Asm. For Lhb Type (SCN EOG), Mounting Arng. For Safety Walls And Coaches	PL NO.33550475, 33596515	As per Indian Railway Drg.no./Spec.L593122, MI006034	0.1 M.T OR
21	Looming Bar Kit, Sprock Plate Kit And Head Stack Assy For WAP-7	PL, 29175965, 29120251	As per PL NO 29408428, 29179985, 29120251	0.2 M.T OR
22	Set of Al Perforated Partition Wbl Plates, Perforated Plates, Diffuser (Without Perforation For LHB EOG	PL NO.33592782, 33502018, 33640385, 33642055, 29175367	As per Indian Railway Drg.no./Spec. MPLPGIALLPGEA VERSION 2, 1933559 VER. 02, LJ76211	0.54 M.T OR
23	Perforated Sheet/Plate, Ms Perforated Sheet, Aluminum Perforated Sheet/Plate, Partition Kit For Perforated	PL NO. 17047780,17142453,17272683,80618100, 33502782, 29175367	As per Indian Railway Drg.no./Spec. 11533845, 17142453, TPE-14-0001, 17272683, 17047780, 17272685, 1PL-9258,	1.54 M.T OR
24	Lever Complete, Traction Lever, Bal Joint Traction Lever, Traction Supply Duct	PL NO. 33500551, 33510038, 33500010, 33558702, 29470079, 29470087, 33557445, 33558702	As per Indian Railway Drg.no./Spec. 1267508 VER. 01R, LW35183, 1267508, C53 973 REF BRED 3403 REV.02, LE16117	1.69 M.T OR

### STORE DETAILS CERTIFICATE

Mrs. VEEPEE ENGINEERS



Authenticity of the certificate can be checked through the web portal: [www.nsicpronline.com](http://www.nsicpronline.com)



CIN : U74140DL1955GOI002481





# राष्ट्रीय लघु उद्योग निगम लिमिटेड

THE NATIONAL SMALL INDUSTRIES CORPORATION LIMITED

S.No. NAI-0300518

Branch Office: Branch Office, Naini Industrial Estate, Udyog Nagar, Naini, Allahabad - 211008

Ph : 0532-2697050

Fax : 0532-2697218

Email : [booffice@nsic.co.in](mailto:booffice@nsic.co.in) / [nsic@nsic.co.in](mailto:nsic@nsic.co.in)

Sr. No. 137470

## STORE DETAILS CERTIFICATE

	Complete , Ducting Assy Cat No R9/B061			
25	Aluminum Finish Strip , Aluminum Flat	PL NO.93120230 , 93120503	PL NO. 93120230 , 93120503	0.5 MT OR
26	St Steel Sheets, Plate, Bars & F. Set of Steel Items	PL NO. 29120147 , 3290355 30532939	PL NO. 29120147 , 3290355 30532939	0.5 MT OR
27	Distance Plate For Flat Bogie Furnishing Plate. Longitudinal Stop End Plate M.S. Shop Complete Perforated Plate Plate Safety Stop Plate, Security Plate, Set of Al Perforated Partition Wall Plates Set of Bracket & Plate For LHB Power Car Set of Floor Plate For LHB Power Car EOG, Stiffening Plate, Stop Plate, Switch Plate Asm Complete With Polyca, Thread Plate Wear Plate Foot Step Assy Cat No.R11	PL NO.33503746, 33540755, 33509440, 33555722, 33501415, 33502018, 33594442, 33690638, 33509591, 33500320, 33592792, 35884793, 30952509, 33690200, 33500575, 42020219, 35982395, 33501520, 29180053 29120238, 31991112	As per Indian Railway Drg no./Spec.1901351 MCF MLE641C2 1286595 VER.00, LW41106, 1803759 VER. 03, 1903599 VER.02, 3 11012.0 89.095.001, 1268397 VER-COR, 1356178 VER. 07, MPLPCIALPCEA VERSION 2, MP13UFFCAR VERSION 2, MPLALFPLWLRM VERSION 0, 3 10113.0 20.095.102, 1901352 VER. 01, EDML126, REV-2, 4 10113.0 21.000.109, 1268398 VER.	0.38 M.T OR
28	Plate, Mounting Plate, Rib Plate Baffle plate, Side Wear Plate, Bottom Wear Plate, Base Plate, Plate Asm Platform Asm, Protection Plate Assy, Cat No	PL NO 29170990 ,29170998 ,17031862	As per Indian Railway Drg No./Specs.10062239, 11121014, 11121002, 10843219, 10533632, 10643771, 10634826, 10943220, 10633990, 10635205, 10934056, 10933019, 40074038, 11246898, 10548104, 11920126, 9424690, 8522752, TPL - 2757, TPL - 2758, 8424880, LG10178, TPL-3373, TPL 9101, 17030985, 822V34831, 11533432, 1153158, DM/WSK-939, NDLA/FR-100, NDLA/FR-105, 11691347, 11691335	0.74 M.T OR
29	Member, Cross Member, Horizontal Member, Set of Horizontal Member For LHB Power Car Coach, Set of Bracket & Member Complete For LHB	PL No.33553658, 33554481, 33553890, 33554456, 33690133, 33690546, 33690594, 33690558, 33691162, 33690534, 33690546, 33690042 33091162, 33090858, 33554717, 33690297, 33555795, 33553641, 33555771, 33554900, 33555783, 33555748, 33554456, 33554481	As per Indian Railway Drg No./Specs.2 10113.1.03.100.176, 2 10113.0.03.100.130, 2 10113.1.03.100.173, 2 10113.1.03.100.175, LE14185, MLE14138, LE14187, LE14110, LE14108, LE14185, LE14187, MLE14138, MLE14128, MPO0CRMPCAR VERSION 3, MPC9-HMRP-CAR VERSION 3, MPPCHHARGSON VERSION 1, 2 10113.0.03.100.110, MPC9-HMRMAC21 VERSION 0 MPLDIO (YPC) VERSION 7, 2 10113.1.03.100.175, 2 10113.0.03.100.130	0.41 M.T OR
30	Pad For Secondary Suspension, Blind	PL NO 33503023, 29170058, 29612822, 29612830		0.05 M.T OR

M/s. VEEPEE ENGINEERS



Authenticity of the certificate can be checked through the web portal: [www.nsicsonline.com](http://www.nsicsonline.com)

CIN : U74140DL1955GOI002481





# राष्ट्रीय लघु उद्योग निगम लिमिटेड

## THE NATIONAL SMALL INDUSTRIES CORPORATION LIMITED

S.No. NA-0000618

Branch Office : Branch Office, Naini, Industrial Estate, Udyog Nagar, Naini, Allahabad - 211009

Ph : 0532-2697090

Fax : 0532-2697210

Email : [bsa@nsic.gov.in](mailto:bsa@nsic.gov.in) [www.nsic.gov.in](http://www.nsic.gov.in)

Sr. No. 137471

	Installation (LH & RH), Set of Cable Tray		As per Indian Railway Org.no./Spec.1903149 VER. a, Spec.17.477	
31	Screen & Screen Asmly. Slack Adjustor, Spacer, Shield & Shield Asm. Shield Azim. Kit Wnut Screen Asmly	PL NO. 17040231, 17981189, 18640059, 20170291, 29100367	As per Indian Railway Specification/Drg No.-170344330,10633819,10633616, 10633817, 10633616,10633615,10633647,10632356, 10633647,10633621,10632367, 10633648, 10633649,10633622,10633814,10632815, 10633612,10644756,10644781, 10844486, 10644757,10634440,10633822,10932106, 8389628,10633571,8555349.	1 M.T OR
32	M.S. Step Complete Chaq. Plate, Al. Checkered Plates Car No. Al. Pressed Sec	PL NO. 33555722 ,29170818 , 229170783	As per Indian Railway Drg No. r8pecs. LW41106 , IS 3502	0.28 M.T OR
33	Step, Step Asm, Loader Step App. Pilot Step, Step Asm For Dec, Step Asm LH, Step Apl. All Types	PL NO.17031014, 17030031, 17031618, 17030697, 17031000, 17030353, 17030065, GM PT NO. 10664222, GM PT NO. 40018868, 40018018, 17020396, 17020064, 17020372, 17021145, 17022551, 17022599, 11532968, 33611056	As per Indian Railway Drg no./Spec. GM PT NO. 10664222, GM PT NO. 40018868, 40018018, 17020396, 17020384, 17020372, 17021145, 17022551, 17022599, 11532968, 33611050	2.5 M.T OR
34	Bogie Frame Asm. For Air Spring Type, Bogie Frame Asm. For Generator Van Side, Bogie Frame For LHB Coaches, Door Frame, Set of Bogie Frame Sub Asm. Set of Frames For LHB Power Car Coaches, Under Frame Complete With Bio Tank Amp. Set of Frame Part Complete And Web For LHB Panel For Door Frame Portal For LHB Hybrid, Set of Frames For LHB Power Car Coach, Frame Part Complete For Power Car LHB, Bogie Bolster For LHB Coaches, and Set of Bogie Bolster Sub Asm. Kit For Bolster Asy	PL NO.33980238, 33980251, 33508735, LW10183, 33980081, 33574601, 33980147, 33980156, 33980147, 33564912, 33593140, 33595550, 33574066, 33574420, 29100471	As per Indian Railway Drg.no./Spec.LG00001 LW03005, LW03007, LW0163, MP16LGF FRAMEASLY VERSION 1, MPFRAMEPOLHB VERSION 3, MPUFRAMELWSON, MPUFRAMELV8, MP09FCW VERSION 0, LE43108, LE43108, MPFRAMEPOLHB VERSION 2 LP10111	0.67 M.T OR
35	Door Ang. (RH & LH) For Stainless Steel, Door Frame, End wall Door Complete Follow C-Component	PL NO. 33566203, LW10183, 33585624, 33565995, 33588021, 33565158, 33565417, 33565188, 33585983, 33585247, 33566315, 33566124, 33583140, 33595550, 33588914, 33568302, 33565417, 33565683,	As per Indian Railway Drg.no./Spec.LA51100, LW10163, LW56300, LS52001, LW56478, LH58121, LH58122, LW56474, MPDOCULHB VERSION 0, MPDOCULHB05 VERSION 1, LP20001, LE43108, LE43108, LS4216, LE58109,	0.48 M.T OR

M/s. VEEPEE ENGINEERS



the certificate can be checked through the web portal: [www.nsicpronline.com](http://www.nsicpronline.com)

CIN : U74140DL1955GOI002481





# राष्ट्रीय लघु उद्योग निगम लिमिटेड

## THE NATIONAL SMALL INDUSTRIES CORPORATION LIMITED

Branch Office : Branch Office, Naini Industrial Estate, Udyog Nagar, Naini, Allahabad - 211008

Ph : 0532-2607050

Fax : 0532-2897218

Email : [booffice@nsic.gov.in](mailto:booffice@nsic.gov.in) [www.nsic.gov.in](http://www.nsic.gov.in)

S.No. NAI-0006/18

Sr. No. 137472

### STORE DETAILS CERTIFICATE

<p>Entrance Door Asm. (RH &amp; LH) For Non AC. Entrance Door Asm. (RH &amp; LH), Lavalory Door Asm. For (RH &amp; LH), Set Of Door Cut Complete For LHB Coaches, Sliding Door (LH &amp; RH) Along with Mounting Arrg. Panel For Door Frame Portal For LHB Hybrid, Door Guidance For Covering, Set of Door Cutout Complete For Power Car LHB Lay. Side Wall Set For LHB Coaches, Side Wall Panel</p>	<p>33690571 33592962 33695197</p>	<p>17045241, 17045253, 17047802, 17044790, 10630974, MP11DORPCAR, VERSION D, MPLAVLHBSIDE VERSION D</p>	
<p>36 Partition Frame Set For LHD /GS Coach, Partition Frame Set For LHD /GS Sch (EOG) Coach, Pillar Asm. For Partition, Honey comb Partition Frame Set For AC3 Tier partition &amp; Partition Frame(M Type ), Mounting Frame (Locomotive Parts, Railway Bogie / Wagon Nest).</p>	<p>PL NO.33574882, 33574827, 33574571, 33574051, 33573890 33574054, 33592792, 33561321</p>	<p>As per Indian Railway Drg.no./Spec.MPLHCP3ACE3LHB VERSION 13, MPPFEQSW VERSION 11, MPPFSCNLSH VERSION 11, MPPFSCNLF VERSION 7, LW10117, MPPFSONLFR VERSION 7</p>	<p>38 M.T OR</p>
<p>37 Upper &amp; Lower Horizontal Softener, Supply And Application</p>	<p>PL NO. 33691022, 33691216, 33690972, 33691085, 33692275</p>	<p>As per Indian Railway Drg.no./Spec. LS14119, LG14107, LG14108</p>	<p>0.21 M.T OR</p>
<p>38 Retention Tank (RH &amp; LH) P. Trap With Ball Valve, IR-DRDO Bio Digester Retention Tank For LHB, Bio Toilet/ Bio Digester &amp; Its Accessories, Retention Tank &amp; Its Accessories (All Type) Retention Tank for Ritro filter / GS Coaches (Locomotive</p>	<p>PL NO.33574805, 33612390, 33610502,33612390, 33610502, 33504179, 30531130, 33624770, 33615718, 33615640, 33615339</p>	<p>As per Indian Railway Drg no./Spec. MIO06418, MIO05711, MIO05710 MIO05711, MIO05648, MIO08284, ICF/ISK, 3-6-3-130, RDSO DRG, NO.CG-16053, CG-14053, MIO06501, I.563108, MKIO05511, MIO05610, MIO05054, MIO05658, MIO06102</p>	<p>0.6 M.T OR</p>

M/s. VEEPEE ENGINEERS



Authenticity of the certificate can be checked through the web portal: [www.nsicprnns.com](http://www.nsicprnns.com)





# राष्ट्रीय लघु उद्योग निगम लिमिटेड

## THE NATIONAL SMALL INDUSTRIES CORPORATION LIMITED

Branch Office : Branch Office, Naini Industrial Estate, Udyog Nagar, Naini, Allahabad - 211009  
 Ph : 0532-2697060 Fax : 0532-2697218  
 Email : [booffice@nsic.gov.in](mailto:booffice@nsic.gov.in) Website : [www.nsic.co.in](http://www.nsic.co.in)

S.No. NAI-03008-B

Sr. No. 137473

Sl. No.	Parts, Railway Bogie/Wagon Nec)	PL NO.	As per Indian Railway Drg.no./Spec.	QTY
38	Sleeve (Locomotive Parts, Railway Bogie/Wagon Nec), Set Of Bus Bar CU/AL/MS, Complete Panel	PL NO. M5626310184, 80NB, 200NB, 300NB, 41132636, M5628310183, M5626156398, M5609258030, M565518003, M565516002, M565518004, M565516017, M565518005, M565518007, 20918370, 29178204	As per Indian Railway Drg.no./Spec. MD/C-833-88207D	0.49 M.T OR
40	Al Composite Lavatory Ceiling Panel, Set of Al Panel For End Wall For LHB Power Car, Set of Side Wall Panel For AC2T ECG LHB, Distribution Panel For Pantry Equipment, Panel A.C.D	PL NO. 33582358, 33593450, 33840305, 33585197, 33582562, 33593140, 33585553, 33593632, 33835419,	As per Indian Railway Drg.no./Spec. MPLALPLMRRM VERSION 1, MPLCEPGRPCAR VERSION 4, MPLSWP2TEL VERSION 22, MPLSWP3TEL VERSION 15, LE43108, LE43138, MPLSSCPLWGR VERSION 1, CC72172	0.4 M.T OR
41	S S Fabrication Items Components (Locomotive Parts, Railway Bogie/Wagon Nec) Components of General Arngt.	PL NO. 33597571, 33587825, 29470092	As per Indian Railway Drg.no./Spec. MPLSMSAL2ACEA VER. DE MPLSMSALPCEA VER. 16	3.33 M.T OR
42	Pillar & Pillar Asm. All Types Body Pillar (RH & LH), Covering For Door Pillar, Part Pillar Asm, Body Pillar For LHB Co Coach, Pillar Asm, For Partition, Set of Pillar & Horizontal Member For LHB, Stiffner Member, Pillar, Pillar Asm (All Type), Ring Complete Stiffner	PL NO. 33585481, 33556957, 33691204, 33890084, 33581817, 33890601, 23690509, 33890081, 33890078, 33590080, 33890086, 33691150, 33574005, 33890492, 33690121, 33574716, 33574728, 33570764, 33574522, 33573890, 33586795, 33660662, 33586578, 33556703, 33697652, 33555461, 33891204, 33890054, 33891095, 33690972, 33891216, 33890601, 33570784, 33574718, 33586771, 33890230, 33690972, 33691216	As per Indian Railway Drg.no./Spec. LG14277, LG14276, LG14149, LG14150, LS43114, LS91129, LW14111, LW14110, LW14123, LW14122, LW14114, LW14143, 2 10113.0.20.112.101, LW14113, LW14112, 10113.1.20.112.123, 2 10113.0.20.112.100, 2 10113.1.20.112.121, LW10216, LW10117, MPPCLHBASGSCN VERSION 1, MPAC3TPILLAR VERSION 25, MPCEPILPCAR VERSION 1.2, 10113.1.20.112.124, 2 10113.1.20.112.123, LW14122, LW14110, LW14122, 2 10113.0.20.112.101, MPC9-IMEMACCC VERSION 0, MPBPLHBASGSCN VERSION 2, LS61129, 210113.1.20.112.121	2.58 M.T OR
43	Cab Structure, Cab Structure IGI (Locomotive Parts, Railway Bogie/Wagon Nec) Long Hood, Long Hood Ash Retainer, All Type (Locomotive Parts, Railway Bogie/Wagon Nec), Cab Assy Complete For WAP/MDG	PL NO. 11990879, 17045307, 17041983, 17047780, 17047788, 17040049, 29170953	As per Indian Railway Drg.no./Spec. MP17RCCFLST VERSION 0, 2 10113.0.20.113.122, 2 10113.0.20.113.133, LG18133, MPROOFLHB	0.48 M.T OR
44	Roof Complete For AC3 Tier (LWACCN) LHB, Roof Flange, Roof	PL NO. 33903864, 33903558, 33891174, 33557581, 33690790	As per Indian Railway Drg.no./Spec. 33890664, 33890388, 33891174, 33557581, 33690790	0.54 M.T OR

COPIES CERTIFICATE

M/s. VEEPEE ENGINEERS



Authenticity of the certificate can be checked through the web portal: [www.nsicportalnsic.com](http://www.nsicportalnsic.com)





# राष्ट्रीय लघु उद्योग निगम लिमिटेड

## THE NATIONAL SMALL INDUSTRIES CORPORATION LIMITED

S.No. NAJ-3000616

Branch Office : Branch Office, Naini, Industrial Estate, Udyog Nagar, Naini, Allahabad - 211009

Ph : 0532-2697080

Fax : 0532-2687218

Email : [booffice@nsic.gov.in](mailto:booffice@nsic.gov.in) [www.nsic.gov.in](http://www.nsic.gov.in)

Sr. No. 137474

45	Ventilator Arm., Set Of Roof Elements For LHB Coaches, Set of Fabricated Asm. For L2ACEA Coach. Set of Fabricated Asm. For L3ACEA Coach, Set Of Fabricated Asm. For LPOEA Coach.	PL NO. 33587571, 33587625, 33587595	As per Indian Railway Drg.no./Spec MPLSMSAL2ACEA VERSION 16, MPLSMSAL3ACEA VERSION 8, MPLSMSALPOEA VERSION 16	0.71 MT OR
46	Lateral Bump Stop. Layout Lettering inside For LHB AC 3Tier	PL NO. 33500046, 33582275, 33582330, 33585230	As per Indian Railway Drg.no./Spec C53 973 RED BRED 8374 REV.02, LEB4013, LS84006 1 11012.0.11.400.001	0.25 M.T OR
47	Center Pivot Asm. Rib, Runoff	PL NO. 33880093, 33500032, 33601228 3388036	As per Indian Railway Drg.no./Spec 1265371 VER-04R, J 10113.1.03.100.199	0.17 M.T OR
48	Set of Centre Arms (Finished) For LHB Bogie, Set of Console (Finished Machine) For LHB Coaches.	PL NO. 33550256, 33503989	As per Indian Railway Drg.no./Spec. MPLCONSOLELHB VERSION 2, MPLCONFINLHB VERSION II, MDTS-241, Rev-N	0.8 M.T OR
49	Neck Assy Roof. Roof Flange, CRC Coupler, Operating Handle CBC	PL NO. 17050613, 33891174, 33601174,	As per Indian Railway Drg.no./Spec RDSO2018/ELMS0454, EMD PT NO 9323491	0.5 M.T OR
50	Shim, Shim, Shim Gali, Adjusting Shim For Body Support For Flat Bogie	PL NO. 33503756, 33890168, 17140541, 17140997	As per Indian Railway Drg.no./Spec 1267474 Ver. 31, 3 10113.0 76.095.075	1.2 MT OR
51	Set of Seat And Berth For LHB SCN FOG Coaches.	PL NO 33600260, 33600193	As per Indian Railway Drg.no./Spec. MPLSBLWSCN VERSION 3, MPLSBLG5A5P VERSION 4	0.45 M.T

Comments / Note  
(Optional):

M/s. VEEPEE ENGINEERS

\*Authenticity of the certificate can be checked through the web portal: [www.nsicproline.com](http://www.nsicproline.com)



CIN : U74140DL1955GOI002481

# Certificate of Registration



This is to certify that the  
Quality Management System of

## VEEPEE ENGINEERS

OFFICE: 123-A, RAVINDRAPURI, VARANASI-221105 (U.P.), INDIA  
WORKS: 225/1, MAHESHPUR INDUSTRIAL AREA, VARANASI 221106 (U.P.), INDIA

has been independently assessed and is  
compliant with the requirements of :

## ISO 9001:2015

For the following scope of activities:

**MANUFACTURE OF "VIMPA" MAKE FLEXIBLE PIPE COUPLING, REPAIR CLAMPS,  
DISMANTLING JOINTS, DIESEL AND ELECTRIC LOCO, COACH, WAGON AND POWER PLANT,  
SPARE OF MILD STEEL AND STAINLESS STEEL LIKE BIOTOILET INVOLVING FABRICATION,  
MACHINING & SHEET METAL AND SPARES FOR TUBEWELL AND IRRIGATION PROJECTS**

This certificate is issued under the following conditions:

1. Fulfilled are requirement as per implemented of suggested standards
2. The certificate remains valid until the manufacturing / supplying conditions are changed.
3. The certificate validity is conditioned by positive results or surveillance audits.
4. After fulfilling the relevant Standard testing performance,

the supplier service shall affix to each device, of the referenced models.

The compliance as shown above can be used, under the responsibility of the manufacturer / supplier, after completion of a Declaration of conformity and compliance with all relevant Standard requirements. The statement is based on a single evaluation of one sample of above-mentioned product service. It does not imply an assessment of the whole production service.

**Certificate Number: UQ-2487**

**Validity of this certificate can be verified at [www.ukglobal.uk](http://www.ukglobal.uk)**

Initial registration date : 16/01/2023

Issue date : 16/01/2023

1st surveillance on or before : 15/01/2024

2nd surveillance on or before : 15/01/2025

Valid until : 15/01/2026

A handwritten signature in blue ink, appearing to read 'Jma'.

**Authorised Signatory**

(UKGlobal Certification & Inspection Limited)



This certificate is the property of UKGlobal Certification & Inspection Limited and shall be returned immediately on request.

71-75 Shelton Street Covent Garden London United Kingdom WC2H9JQ

Website : [www.ukglobal.uk](http://www.ukglobal.uk), [enquiries@ukglobal.uk](mailto:enquiries@ukglobal.uk)

Company No.118478